

Atlas Copco Stationary Air Compressors

GA 11+, GA 15+, GA 18+, GA 22+, GA 30
WorkPlace / WorkPlace Full-Feature

Parts list

From following serial No. onwards :
API - 295 000

- Copyright 2006, Atlas Copco Airpower n.v., Antwerp, Belgium.
Any unauthorized use or copying of the contents or any part thereof is prohibited.
This applies in particular to trademarks, model denominations, part numbers and drawings.
- **Use only authorized parts.** Any damage or malfunction caused by the use of unauthorized parts is not covered by Warranty or Product Liability.

No. 2930 7003 00

Registration code : APC G11-30C / 39

2006-04

www.atlascopco.com

Atlas Copco

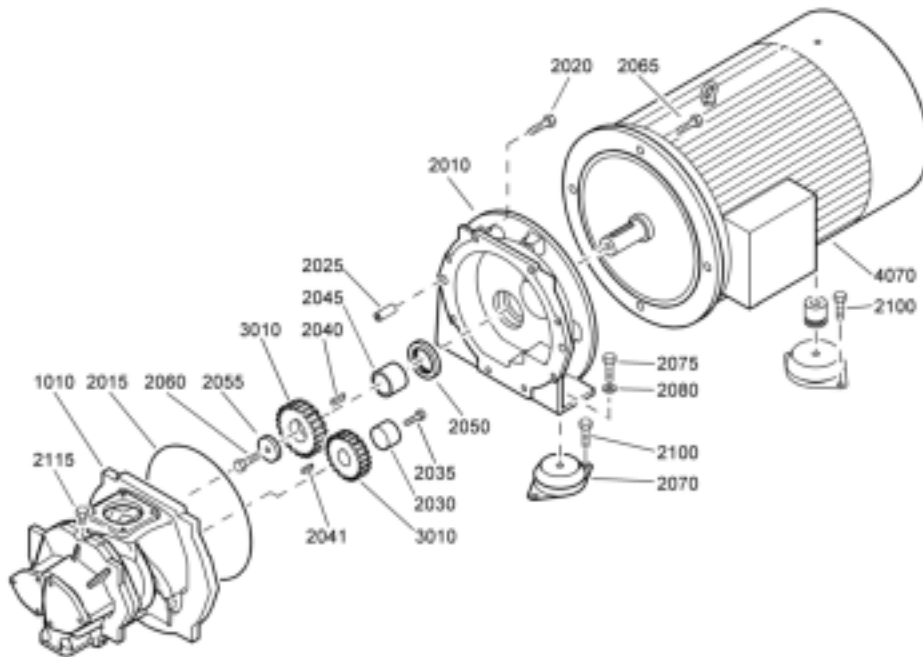
Contents
Inhoud
Innehåll
Inhaltsverzeichnis
Table des matières
Indice

Indice
Innehållsförteckning
Indice
Innehållsförteckning
Sisällysluettelo

| | | | |
|--------------------------------------------------------------------------------------------------------------------------------------------------------------------------------------------------------------------------------------------------------------|---|-------------------------------------------------------------------------------------------------------------------------------------------------------------------------------------------------------------------------------------|----|
| Drive arrangement Aandrijfuitvoering Drivarrangemang Antriebsanordnung Dispositif d'entraînement Disposición de accionamiento Disposizione di azionamento Arrangement Disposição de accionamento Drivarrangement Rakenne | 1 | Air outlet Luchtuitlaat Luftutlopp Luftauslaß Sortie d'air Salida de aire Mandata dell'aria Luftafgang Saída de ar Luftutløp Paineilmaputki | |
| Air flow Luchtstroming Luftflöde Luftstrom Flux d'air Flujo de aire Flusso d'aria Luftflow Fluxo de ar Luftstrøm Ilman virtaus | 2 | - WorkPlace | 7 |
| Oil system Oliesysteem Oljesystem Ölsystem Système d'huile Sistema de aceite Sistema dell'olio Oliesystem Sistema de óleo Oljesystem Voitelujärjestelmä | 3 | - WorkPlace FF | 8 |
| Air receiver Luchtketel Luftbehållare Luftbehälter Réservoir d'air Depósito de aire Serbatoio dell'aria Luftbeholder Reservatório de ar Luftbeholder Ilmasäiliö | 4 | Air dryer Luchtdroger Lufttorkare Lufttrockner Sécheur d'air Secador de aire Essiccatore d'aria Lufttørrer Secador de ar Lufttørker Kuivain | 9 |
| Unloading valve Ontlastventiel Avlastningsventil Entlastungsventil Soupape de décharge Válvula de descarga Valvola di messa a vuoto Aflastningsventil Válvula de descarga Avlastningsventil Kevennysventtiili | 5 | By-pass dryer Omloopleiding Förbildningskanal Umgehungsleitung Tuyaux de by-pass Tubería de derivación By-pass By-pass Tubagem de derivação Omløpsrør Ohitus - WorkPlace FF | 10 |
| Regulating system Regelsysteem Reglersystem Regelsystem Système de régulation Sistema de regulación Sistema di regolazione Reguleringssystem Sistema de regulação Reguleringssystem Säätöjärjestelmä - WorkPlace | 6 | Bodywork Carrosserie Karosseri Karosserie Capotage Carrocería Cappottatura Karosseri Carroceria KabinettKotelo | 11 |
| | | Start cubicle Startkast Startskåp Anlaßschrank Armoire de démarrage Cubículo de arranque Armadio apparecch. di avviamento Starterskab Cubículo Startskap Käynnistinkotelo - Star/delta - IEC | 12 |
| | | - DOL - CSA/UL | 13 |

| | | |
|-------------------------------------------|-------------------------------|----|
| Energy recovery system | Rain protection | |
| Energjätvinningsystem | Regenbescherming | |
| Energierückgewinnungssystem | Regnskydd | |
| Système de récupération d'énergie | Regenschutz | |
| Sistema de recuperación de energía | Protection contre la pluie | |
| Sistema di recupero energia | Protección la lluvia | |
| Energigenvinding | Protezione contro la pioggia | |
| Sistema de recuperação de energia | Regnbeskyttelse | |
| Energjenvinningsystem | Proteção contra a chuva | |
| Energian talteenottojärjestelmä | Regnbeskyttelse | |
| | Sadesvuoja | 20 |
| 14 | | |
| Drain system | Lifting device | |
| Aftapsysteem | Hijstoestel | |
| Avtappningssystem | Lyftverktyg | |
| Abläßsystem | Hebezeug | |
| Système de vidange | Outil de levage | |
| Sistema de drenaje | Aparato de elevación | |
| Sistema di scarico | Utensile di sollevamento | |
| Drænsystem | Lyftverktyg | |
| Sistema de drenagem de condensados | Ferramenta de elevação | |
| Avtappingssystem | Løfteværktøj | |
| Lauhteenpoistojärjestelmä | Nostotyökälu | 21 |
| | | |
| - Oil Separator condensate Drain | Heavy duty filters | |
| | Filters, hoge prestatie | |
| 15 | Högeffektfilter | |
| - Electronic Water Drain | Hochleistungsfilter | |
| | Filtres hautement performants | |
| 16 | Filtros para trabajo pesado | |
| | Filtro per servizio pesante | |
| DD Filter kit | Heavy duty filtre | |
| DD Filter kit | Filtro para trabalho pesado | |
| DD Filter kit | Heavy-duty filtre | |
| DD Filter kit | Suurtehosuodattimet | 22 |
| Kit, filtre DD | | |
| Equipo de filtros DD | Service kits | |
| Kit, filtro DD | Service kits | |
| DD Filtersaet | Service kits | |
| Kit, filtro DD | Service kits | |
| DD Filtersett | Kit per la manutenzione | |
| DD-suodatinsarja | Service kits | |
| | Conjuntos de reparação | |
| - Full-feature | Servicesett | |
| | Huoltotarvikesarjat | 23 |
| 17 | | |
| Modulating control | | |
| Modulatiecontrole | | |
| Moduleringskontroll | | |
| Modulationskontrolle | | |
| Contrôle de la modulation | | |
| Control de modulación | | |
| Controllo continuo | | |
| Modulationsstyring | | |
| Controlo de modulação | | |
| Modulasjonsregulering | | |
| Modulointisäätö | | 18 |
| | | |
| 18 | | |
| Main switch | | |
| Hoofdschakelaar | | |
| Huvudströmbrytare | | |
| Hauptschalter | | |
| Interruteur principal | | |
| Interruptor principal | | |
| Interruttore della linea di alimentazione | | |
| Hovedrødbryder | | |
| Interruptor principal | | |
| Hovedstrømbryter | | |
| Pääkytkin | | 19 |
| | | |
| 19 | | |

1



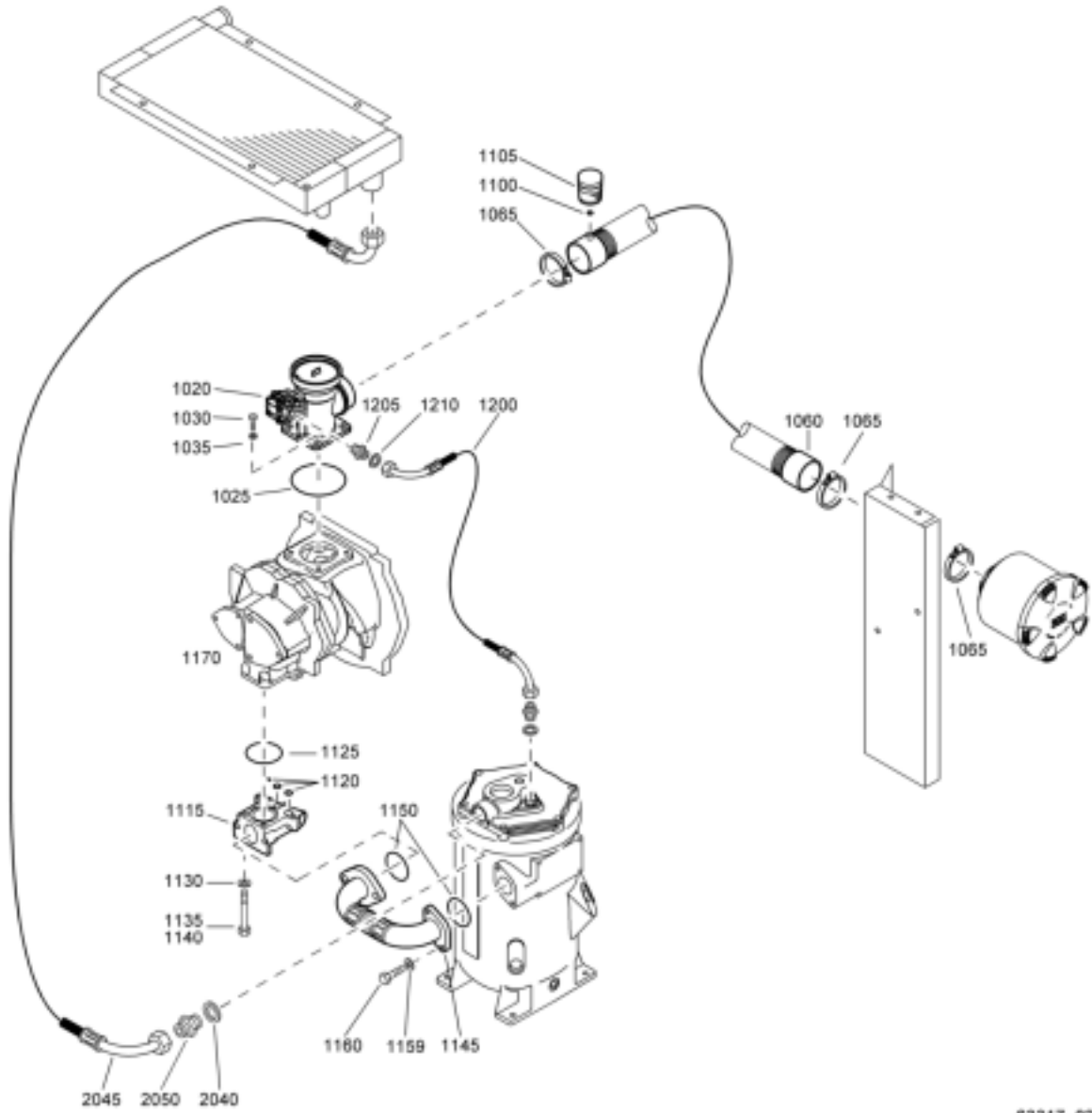
63316_01

| Ref. | Partnumber | Qty | Name | Remarks | Ref. | Partnumber | Qty | Name | Remarks |
|------|--------------|-----|---------------|---------|------|--------------|-----|--------------|---------|
| 1010 | 1616 6712 90 | 1 | Service stage | | 2050 | 1616 5742 00 | 1 | Seal ring | |
| 2010 | 1622 0007 00 | 1 | Gear casing | | 2055 | 1622 0010 00 | 1 | Washer | |
| 2015 | 0663 2103 22 | 1 | O-ring | | 2060 | 0147 1478 03 | 1 | Hexagon bolt | |
| 2020 | 0147 1364 03 | 8 | Hexagon bolt | | 2065 | 0147 1475 03 | 4 | Hexagon bolt | |
| 2025 | 0101 1951 40 | 2 | Pin | | 2070 | 1613 6752 01 | 2 | Antivibr.pad | |
| 2030 | 1622 0138 00 | 1 | Spacer | | 2075 | 0147 1363 03 | 2 | Hexagon bolt | |
| 2035 | 0147 1368 03 | 1 | Hexagon bolt | | 2080 | 0301 2344 00 | 2 | Washer | |
| 2040 | 0337 0009 42 | 1 | Parallel key | | 2100 | 1619 2766 00 | 6 | Bolt | |
| 2041 | 0337 0009 45 | 1 | Parallel key | | 2115 | 1619 6032 00 | 2 | Nipple | |
| 2045 | 1622 0009 00 | 1 | Bushing | | | | | | |

Drive arrangement

| Ref. | Part number | Qty | Name | Remarks | Ref. | Part number | Qty | Name | Remarks |
|------|--------------|-----|----------------------|---------|------|--------------|-----|-----------------------------------|---------|
| 3010 | | 1 | Gear wheel set | | | | | | |
| | 1603 0702 50 | | GA11+ 7.5 bar(e) | | | 1603 0702 55 | | GA22+ 175 psig | |
| | 1603 0702 51 | | GA11+ 7.5 bar(e) HAV | | | 1603 0702 68 | | GA22+ 175 psig HAV | |
| | 1603 0702 51 | | GA11+ 8.5 bar(e) | | | 1603 0702 64 | | GA30 7.5 bar(e) | |
| | 1603 0702 52 | | GA11+ 8.5 bar(e) HAV | | | 1603 0702 64 | | GA30 8.5 bar(e) | |
| | 1603 0702 52 | | GA11+ 10 bar(e) | | | 1603 0702 66 | | GA30 10 bar(e) | |
| | 1603 0702 71 | | GA11+ 10 bar(e) HAV | | | 1603 0702 60 | | GA30 13 bar(e) | |
| | 1603 0702 70 | | GA11+ 13 bar(e) | | | 1603 0702 61 | | GA30 100 psig | |
| | 1603 0702 70 | | GA11+ 13 bar(e) HAV | | | 1603 0702 62 | | GA30 125 psig | |
| | 1603 0702 52 | | GA11+ 100 psig | | | 1603 0702 74 | | GA30 150 psig | |
| | 1603 0702 71 | | GA11+ 100 psig HAV | | 4070 | 1603 0702 76 | | GA30 175 psig | |
| | 1603 0702 71 | | GA11+ 125 psig | | | | 1 | Motor | |
| | 1603 0702 53 | | GA11+ 125 psig HAV | | | 1080 4070 01 | | GA 11+ 200-220V 50/60Hz | |
| | 1603 0702 70 | | GA11+ 150 psig | | | 1080 4070 12 | | GA 11+ 200-230V/ 440-460V 60Hz | |
| | 1603 0702 69 | | GA11+ 150 psig HAV | | | | | GA 11+ 230V 50Hz | |
| | 1603 0702 69 | | GA11+ 175 psig | | | 1080 4070 02 | | GA 11+ 380V 60Hz | |
| | 1603 0702 69 | | GA11+ 175 psig HAV | | | 1080 4070 13 | | GA 11+ 380V 60Hz | |
| | 1603 0702 55 | | GA15+ 7.5 bar(e) HAV | | | 1080 4070 04 | | GA 11+ 400V 50Hz | |
| | 1603 0702 55 | | GA15+ 8.5 bar(e) | | | 1080 4070 21 | | GA 11+ 400V 50Hz + thermistors | |
| | 1603 0702 68 | | GA15+ 8.5 bar(e) HAV | | | | | GA 15+ 200-220V 50/60Hz | |
| | 1603 0702 68 | | GA15+ 10 bar(e) | | | 1080 4071 01 | | GA 15+ 200-230V/ 440-460V 60Hz | |
| | 1603 0702 72 | | GA15+ 10 bar(e) HAV | | | 1080 4071 12 | | GA 15+ 230V 50Hz | |
| | 1603 0702 50 | | GA15+ 13 bar(e) | | | | | GA 15+ 380V 60Hz | |
| | 1603 0702 51 | | GA15+ 13 bar(e) HAV | | | 1080 4071 02 | | GA 15+ 380V 60Hz + thermistors | |
| | 1603 0702 72 | | GA15+ 100 psig | | | 1080 4071 13 | | GA 15+ 400V 50Hz | |
| | 1603 0702 75 | | GA15+ 100 psig HAV | | | 1080 4071 43 | | GA 15+ 380V 60Hz + thermistors | |
| | 1603 0702 75 | | GA15+ 125 psig | | | | | GA 15+ 400V 50Hz | |
| | 1603 0702 50 | | GA15+ 125 psig HAV | | | 1080 4071 04 | | GA 15+ 400V 50Hz + thermistors | |
| | 1603 0702 51 | | GA15+ 150 psig | | | 1080 4071 21 | | GA 15+ 400V 50Hz + thermistors | |
| | 1603 0702 52 | | GA15+ 150 psig HAV | | | | | GA 15+ 460V 60Hz + thermistors | |
| | 1603 0702 52 | | GA15+ 175 psig | | | 1080 4071 22 | | GA 15+ 575V 60Hz | |
| | 1603 0702 71 | | GA15+ 175 psig HAV | | | | | GA 18+ 200-230V/ 440-460V 60Hz | |
| | 1603 0702 73 | | GA15+ 7.5 bar(e) | | | 1080 4071 14 | | GA 18+ 230V 50Hz | |
| | 1603 0702 76 | | GA18+ 7.5 bar(e) | | | 1080 4072 12 | | GA 18+ 380V 60Hz | |
| | 1603 0702 77 | | GA18+ 7.5 bar(e) HAV | | | | | GA 18+ 400V 50Hz | |
| | 1603 0702 67 | | GA18+ 8.5 bar(e) | | | 1080 4072 02 | | GA 18+ 400V 50Hz + thermistors | |
| | 1603 0702 63 | | GA18+ 8.5 bar(e) HAV | | | 1080 4072 13 | | GA 18+ 460V 60Hz + thermistors | |
| | 1603 0702 54 | | GA18+ 10 bar(e) | | | 1080 4072 04 | | GA 22+ 200-220V 50/60Hz | |
| | 1603 0702 73 | | GA18+ 10 bar(e) HAV | | | 1080 4072 21 | | GA 22+ 200-230V/ 440-460V 60Hz | |
| | 1603 0702 55 | | GA18+ 13 bar(e) | | | | | GA 22+ 230V 50Hz | |
| | 1603 0702 68 | | GA18+ 13 bar(e) HAV | | | 1080 4072 22 | | GA 22+ 380V 60Hz | |
| | 1603 0702 73 | | GA18+ 100 psig | | | | | GA 22+ 400V 50Hz | |
| | 1603 0702 55 | | GA18+ 100 psig HAV | | | 1080 4072 14 | | GA 22+ 400V 50Hz + thermistors | |
| | 1603 0702 55 | | GA18+ 125 psig | | | 1080 4073 01 | | GA 22+ 575V 60Hz | |
| | 1603 0702 68 | | GA18+ 125 psig HAV | | | 1080 4073 12 | | GA 30 200-230V/ 440-460V 60Hz | |
| | 1603 0702 68 | | GA18+ 150 psig | | | | | GA 30 230V 50Hz | |
| | 1603 0702 72 | | GA18+ 150 psig HAV | | | 1080 4073 02 | | GA 30 380V 60Hz | |
| | 1603 0702 75 | | GA18+ 175 psig | | | 1080 4073 13 | | GA 30 400V 50Hz | |
| | 1603 0702 50 | | GA18+ 175 psig HAV | | | 1080 4073 04 | | GA 30 400V 50Hz + thermistors | |
| | 1603 0702 60 | | GA22+ 7.5 bar(e) | | | 1080 4073 21 | | GA 30 460V 60Hz + thermistors | |
| | 1603 0702 74 | | GA22+ 7.5 bar(e) HAV | | | | | GA 22+ 460V 60Hz + thermistors | |
| | 1603 0702 62 | | GA22+ 8.5 bar(e) | | | 1080 4073 22 | | GA 22+ 575V 60Hz | |
| | 1603 0702 74 | | GA22+ 8.5 bar(e) HAV | | | | | GA 30 200-230V/ 440-460V 60Hz | |
| | 1603 0702 76 | | GA22+ 10 bar(e) | | | 1080 4074 02 | | GA 30 230V 50Hz | |
| | 1603 0702 63 | | GA22+ 10 bar(e) HAV | | | 1080 4074 13 | | GA 30 380V 60Hz | |
| | 1603 0702 63 | | GA22+ 13 bar(e) | | | 1080 4074 13 | | GA 30 400V 50Hz | |
| | 1603 0702 54 | | GA22+ 13 bar(e) HAV | | | 1080 4074 04 | | GA 30 400V 50Hz + thermistors | |
| | 1603 0702 67 | | GA22+ 100 psig | | | 1080 4074 21 | | GA 30 460V 60Hz + thermistors | |
| | 1603 0702 63 | | GA22+ 100 psig HAV | | | | | GA 30 575V 60Hz | |
| | 1603 0702 63 | | GA22+ 125 psig | | | | | | |
| | 1603 0702 54 | | GA22+ 125 psig HAV | | | 1080 4074 22 | | | |
| | 1603 0702 73 | | GA22+ 150 psig | | | | | | |
| | 1603 0702 55 | | GA22+ 150 psig HAV | | | 1080 4074 14 | | | |

2



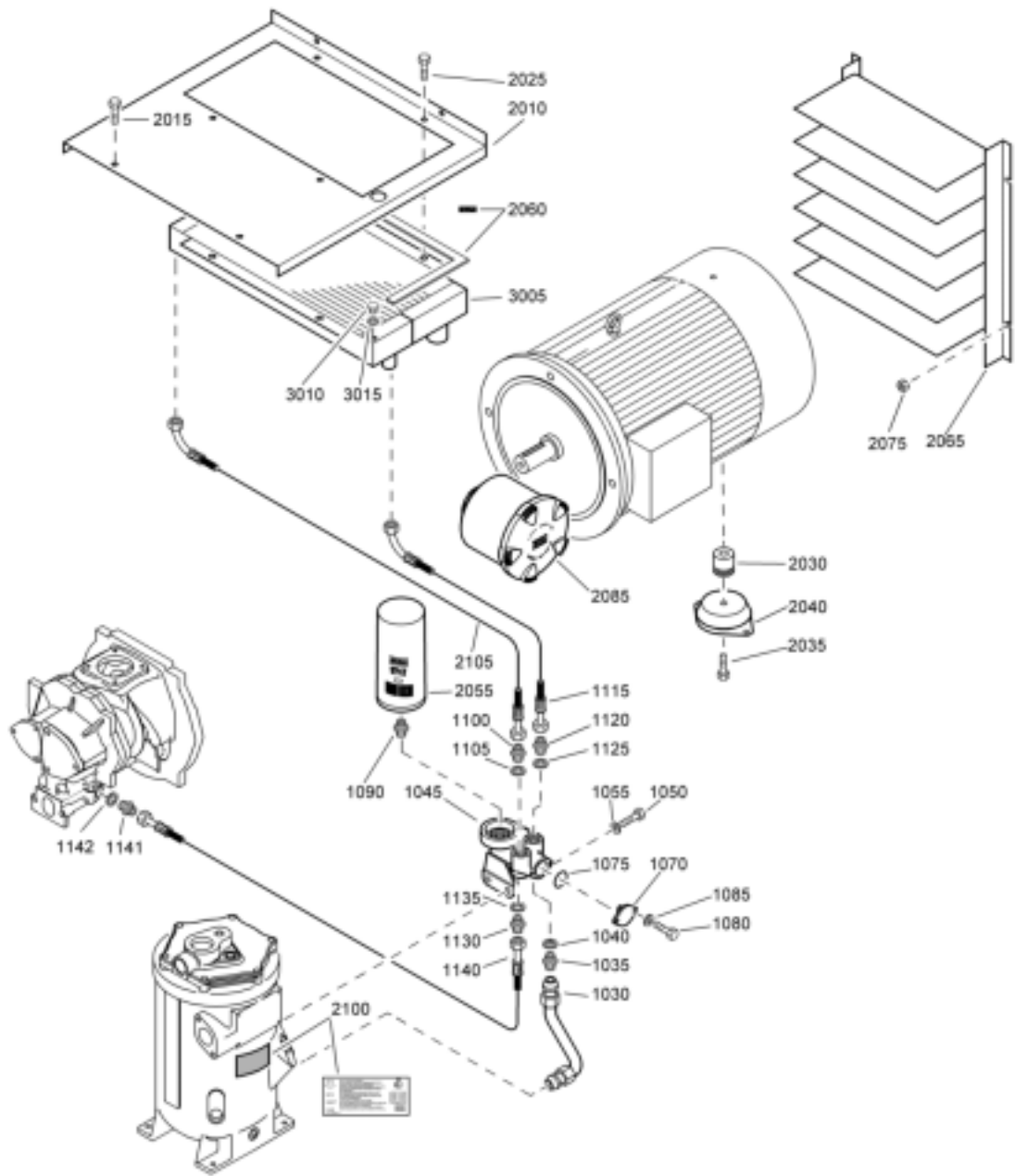
63317_02

Air flow

2

| Ref. | Partnumber | Qty | Name | Remarks | Ref. | Partnumber | Qty | Name | Remarks |
|------|--------------|-----|-----------------|---------|------|--------------|-----|---------------|---------|
| 1020 | <<< >>> | 1 | Unloading valve | | 1135 | 0147 1329 03 | 2 | Hexagon bolt | |
| 1025 | 0663 7142 00 | 1 | O-ring | | 1140 | 0147 1335 03 | 2 | Hexagon bolt | |
| 1030 | 0147 1325 03 | 4 | Hexagon bolt | | 1145 | 1622 0015 00 | 1 | Hose assembly | |
| 1035 | 0301 2335 00 | 4 | Washer | | 1150 | 0663 7134 00 | 2 | O-ring | |
| 1060 | 1622 1788 10 | 1 | Hose assembly | | 1159 | 0301 2335 00 | 4 | Washer | |
| 1065 | 0347 6114 00 | 3 | Hose clip | | 1160 | 0147 1325 03 | 4 | Hexagon bolt | |
| 1105 | 1613 7912 01 | 1 | Indicator | | 1200 | 0574 9914 15 | 1 | Hose assembly | |
| 1110 | 0657 5742 00 | 1 | Flat gasket | | 1205 | 1079 5840 14 | 1 | Nipple | |
| 1115 | 1622 0014 01 | 1 | Housing | | 1210 | 0661 1000 40 | 1 | Seal washer | |
| 1120 | 0663 2111 35 | 3 | O-ring | | 2240 | 0661 1000 44 | 1 | Seal washer | |
| 1125 | 0663 7134 00 | 1 | O-ring | | 2245 | 1622 0590 00 | 1 | Hose ass'y | |
| 1130 | 0301 2335 00 | 4 | Washer | | 2250 | 2250 4983 00 | 1 | Nipple | |

3



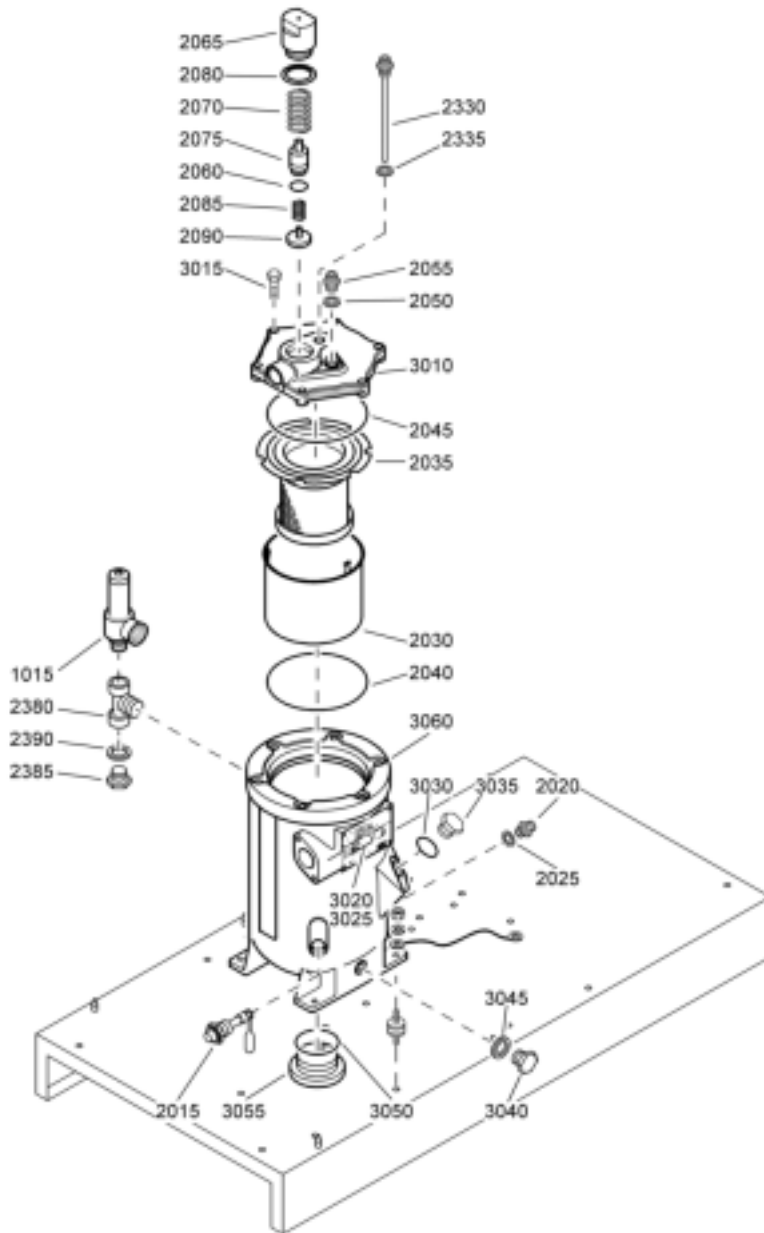
63318_05

Oil system

3

| Ref. | Partnumber | Qty | Name | Remarks | Ref. | Partnumber | Qty | Name | Remarks |
|------|--------------|-----|----------------|---------|-------------|---------------------|----------|-----------------------------------------------------------------------------------------------------------------------------------------------------------|---------|
| 1030 | 1622 0071 00 | 1 | Pipe | | 2040 | | 1 | Antivibr.pad | |
| 1035 | 1079 5840 27 | 1 | Hex.nipple | | | 1613 6752 16 | | GA 11+ | |
| 1040 | 0661 1000 43 | 1 | Seal washer | | | 1613 6752 16 | | GA 15+ | |
| 1045 | 1613 6883 03 | 1 | Valve housing | | | 1613 6752 16 | | GA 18+ | |
| 1050 | 0147 1362 03 | 2 | Hexagon bolt | | | 1613 6752 16 | | GA 22+ | |
| 1055 | 0301 2344 00 | 2 | Washer | | | 1613 6752 17 | | GA 30 | |
| 1070 | 1614 6118 00 | 1 | Flange | | 2055 | 1613 6105 00 | 1 | Oil filter | |
| 1075 | 0663 2101 95 | 1 | O-ring | | 2060 | 1619 5188 00 | AR | Seal | |
| 1080 | 0147 1246 03 | 2 | Hexagon bolt | | 2065 | | 1 | Baffle ass'y | 1) |
| 1085 | 0301 2321 00 | 2 | Washer | | | 1622 0160 80 | | GA 11+ | |
| 1090 | 1619 3770 00 | 1 | Nipple | | | 1622 0160 80 | | GA 15+ | |
| 1100 | 1079 5840 27 | 1 | Hex.nipple | | | 1622 0160 80 | | GA 18+ | |
| 1105 | 0661 1000 43 | 1 | Seal washer | | | 1622 0160 80 | | GA 22+ | |
| 1115 | 0574 9911 14 | 1 | Hose assembly | | | 1622 0160 80 | | GA 30 bar(e) | |
| 1120 | 1079 5840 27 | 1 | Hex.nipple | | | 1622 0364 80 | | GA 30 psig | |
| 1125 | 0661 1000 43 | 1 | Seal washer | | 2075 | 0266 7024 02 | 4 | Nut | |
| 1130 | 1079 5840 27 | 1 | Hex.nipple | | 2085 | 1622 0004 00 | 1 | Filter housing | |
| 1135 | 0661 1000 43 | 1 | Seal washer | | 2100 | 1079 9909 57 | 1 | Label | |
| 1140 | 0574 9911 13 | 1 | Hose assembly | | 2105 | | 1 | Hose assembly | |
| 1141 | 1079 5840 21 | 1 | Hexagon nipple | | | 0574 9910 10 | | GA 11+ | |
| 1142 | 0661 1000 39 | 1 | Seal washer | | | 0574 9910 10 | | GA 15+ | |
| 2010 | | 1 | Plate | | | 0574 9911 17 | | GA 18+ | |
| | 1622 0110 00 | | GA 11+ | | | 0574 9911 17 | | GA 22+ | |
| | 1622 0111 00 | | GA 15+ | | | 0574 9911 17 | | GA 30 | |
| | 1622 0112 00 | | GA 18+ | | | | 1 | Combi-cooler | |
| 2015 | 0147 1963 08 | 4 | Hexagon bolt | | | 1622 3454 00 | | GA 11+ | |
| 2025 | 0147 1963 08 | 4 | Hexagon bolt | | | 1622 0942 00 | | GA 15+ | |
| 2030 | | 1 | Spacer | | | 1622 0943 00 | | GA 18+ | |
| | 1622 0012 00 | | GA 11+ | | | 1622 0944 00 | | GA 22+ | |
| | 1622 0012 00 | | GA 15+ | | | 1622 0945 00 | | GA 30 | |
| | 1622 0012 00 | | GA 18+ | | 3005 | | • 1 | Combi-cooler | |
| | 1622 0012 00 | | GA 22+ | | 3010 | 0686 3716 01 | • 1 | Hexagon plug | |
| | 1622 0013 00 | | GA 30 | | 3015 | 0653 1062 00 | • 1 | Flat gasket | |
| 2035 | | 1 | Hexagon bolt | | 1) | | | Lined with / Bekleed met / Beklädd med / Ausgekleidet mit / Garnir de / Rivestido de / Allineato con / Foret med / Revestido com / Kledd med / Vuorattu : | |
| | 0147 1376 03 | | GA 11+ | | | | | Foam: 0395 6001 69 (AR) 50 x 2040 x 1650 | |
| | 0147 1376 03 | | GA 15+ | | | | | | |
| | 0147 1376 03 | | GA 18+ | | | | | | |
| | 0147 1376 03 | | GA 22+ | | | | | | |
| | 0147 1370 03 | | GA 30 | | | | | | |

4



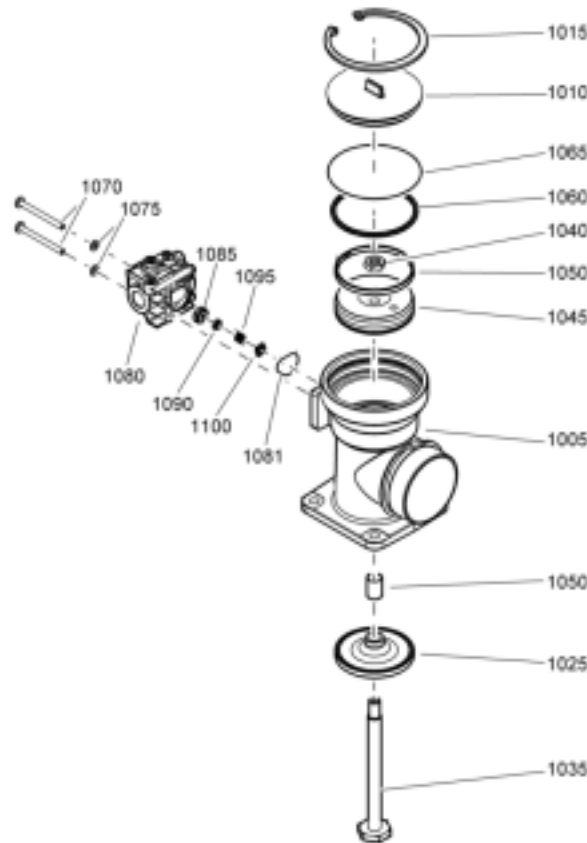
61600_03

Air receiver

| Ref. | Partnumber | Qty | Name | Remarks | Ref. | Partnumber | Qty | Name | Remarks |
|------|---------------------|-----|---------------------|---------|------|---------------------|------|----------------------|---------|
| 1015 | | 1 | Safety valve | | 2085 | 1622 0525 00 | • 1 | Spring | |
| | 0832 1000 77 | | 7.5 bar(e) | | 2090 | 1622 0523 00 | • 1 | Valve disk | |
| | 0832 1000 78 | | 8.5 bar(e) | | 2330 | 1622 0017 10 | • 1 | Scavenge line | |
| | 0832 1000 78 | | 10 bar(e) | | 2335 | 0653 1100 00 | • 1 | Flat gasket | |
| | 0832 1000 79 | | 13 bar(e) | | 2380 | 0564 0000 60 | • 1 | Tee | |
| | 0830 1008 35 | | 100 psig | | 2385 | 0686 3716 02 | • 1 | Hexagon plug | |
| | 0830 1008 35 | | 125 psig | | 2390 | 0661 1000 39 | • 1 | Seal washer | |
| | 0830 1008 38 | | 150 psig | | | | • 1 | Oil separator | |
| | 0830 1008 38 | | 175 psig | | | 1622 0549 99 | | ASME | |
| | | 1 | Vessel ass'y | | | 1622 0549 82 | | DIR | |
| | 1622 0589 99 | | ASME | | | 1622 0549 82 | | LLOYD'S | |
| | 1622 0589 82 | | DIR | | | 1622 0549 85 | | MOL | |
| | 1622 0589 82 | | LLOYD'S | | | 1622 0549 98 | | UDP | |
| | 1622 0589 85 | | MOL | | 3010 | 1622 0520 00 | •• 1 | Valve housing | |
| | 1622 0589 99 | | PED | | 3015 | 0147 1958 86 | •• 6 | Hexagon bolt | |
| | 1622 0589 98 | | UDT | | 3020 | | •• 1 | Dataplate | |
| 2015 | 1613 9020 00 | • 1 | Level gauge | | | 1622 0003 01 | | ASME | |
| 2020 | 1079 5840 27 | • 1 | Hex.nipple | | | 1622 0003 00 | | DIR | |
| 2025 | 0661 1000 43 | • 1 | Seal washer | | | 1622 0003 00 | | LLOYD'S | |
| 2030 | 1622 0016 00 | • 1 | Shield | | | 1622 0003 00 | | MOL | |
| 2035 | 1622 0516 00 | • 1 | Oil sep element | | | 1622 0003 01 | | UDP | |
| 2040 | 0663 2111 24 | • 1 | O-ring | | 3025 | 0244 4184 00 | •• 4 | Drive screw | |
| 2045 | 0663 2111 23 | • 1 | O-ring | | 3030 | 1202 8992 00 | •• 1 | Plug | |
| 2050 | 0661 1000 40 | • 1 | Seal washer | | 3035 | 0663 2102 15 | •• 1 | O-ring | |
| 2055 | 1079 5840 14 | • 1 | Nipple | | 3040 | 0686 3716 30 | •• 1 | Hexagon plug | |
| 2060 | 0663 2111 78 | • 1 | O-ring | | 3045 | 0661 1000 40 | •• 1 | Seal washer | |
| 2065 | 1622 0521 00 | • 1 | Housing | | 3050 | 0663 2111 18 | •• 1 | O-ring | |
| 2070 | 1622 0524 00 | • 1 | Spring | | 3055 | 1622 0001 00 | •• 1 | Plug | |
| 2075 | 1622 0522 00 | • 1 | Piston | | 3060 | 1622 0000 00 | •• 1 | Vessel | |
| 2080 | 0661 1000 46 | • 1 | Seal washer | | | | | | |

5

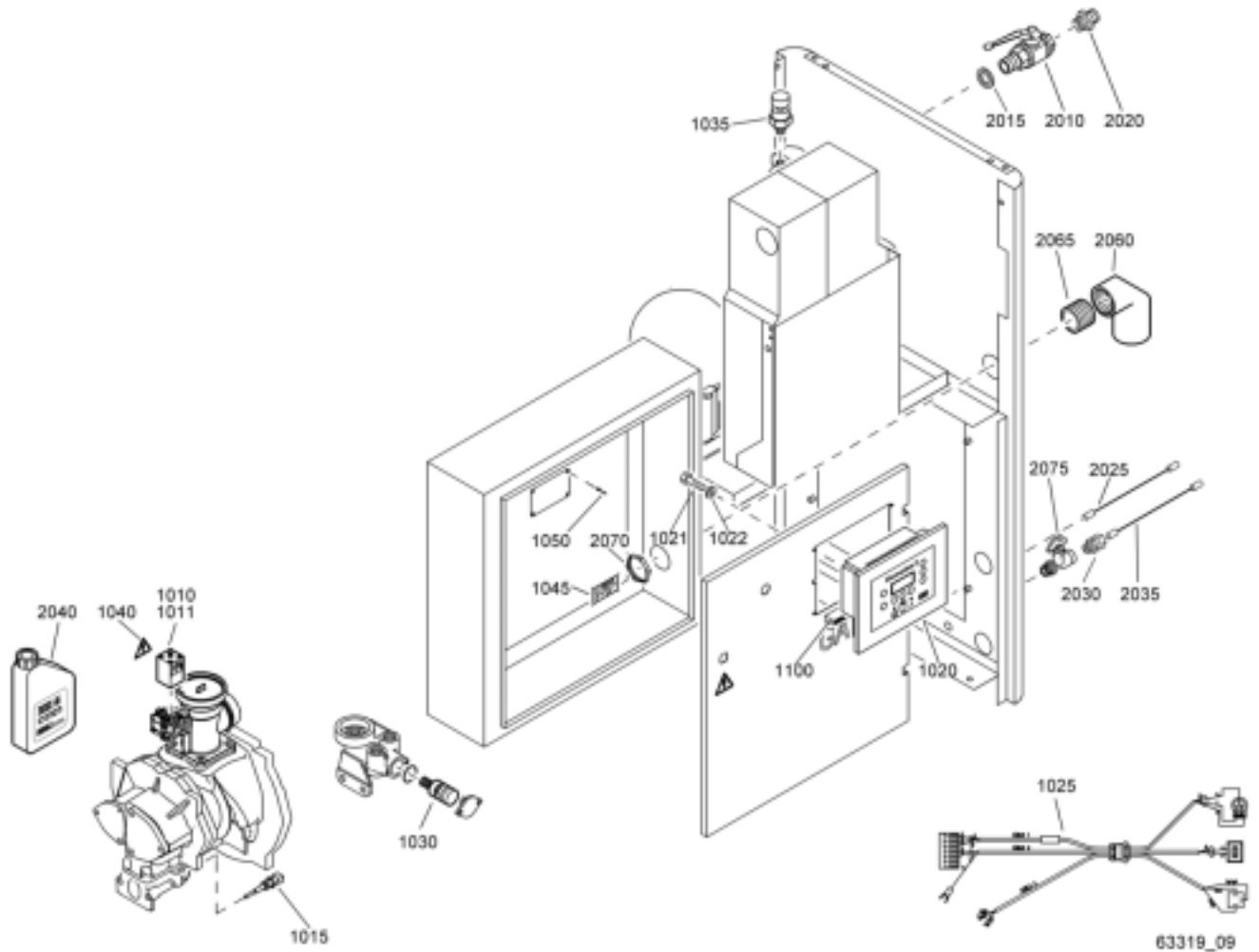
Unloading Valve



62952_20

| Ref. | Partnumber | Qty | Name | Remarks | Ref. | Partnumber | Qty | Name | Remarks |
|------|---------------------|----------|------------------------|---------|------|---------------------|----------|-------------------------------------------------------------|---------|
| | 1622 1713 80 | 1 | Unloading valve | | 1080 | 1622 3694 80 | • 1 | Blow off valve | 1) |
| 1005 | | • 1 | Housing | | 1081 | 0663 7128 00 | • 1 | O-ring | |
| 1010 | 1622 1717 00 | • 1 | Cover | | 1085 | 1622 2906 00 | • 1 | Bushing | |
| 1015 | 0335 2164 00 | • 1 | Circlip | | 1090 | 1622 2905 00 | • 1 | Seal | |
| 1025 | 1622 1755 80 | • 1 | Valve ass'y | | 1095 | 1622 2904 00 | • 1 | Spring | |
| 1035 | 1622 1773 00 | • 1 | Rod | | 1100 | 1622 2903 00 | • 1 | Spring guide | |
| 1040 | 0261 1090 86 | • 1 | Nut | | | | | | |
| 1045 | 1622 1789 00 | • 1 | Piston | | 1) | | | See "Service kits" / Zie "Service kits" / Se "Service kits" | |
| 1050 | 1622 1790 00 | • 1 | Guidance tape | | | | | Siehe "Service kits" / Voir "Service kits" / Véase | |
| 1055 | 1622 1797 00 | • 1 | Bushing | | | | | "Service kits" / Vedere "Kit per la manutenzione" / Se | |
| 1060 | 1622 1798 00 | • 1 | Quad-ring | | | | | "Service kits" / Ver "Conjuntos de reparação" / Se | |
| 1065 | 0663 2104 98 | • 1 | O-ring | | | | | "Servicesett" / Katso "Huoltotarvik | |
| 1070 | 0160 0996 86 | • 2 | Screw | | | | | | |
| 1075 | 0301 2318 00 | • 2 | Washer | | | | | | |
| | | | | | | 2902 0161 00 | 1 | Unloader valve kit | |

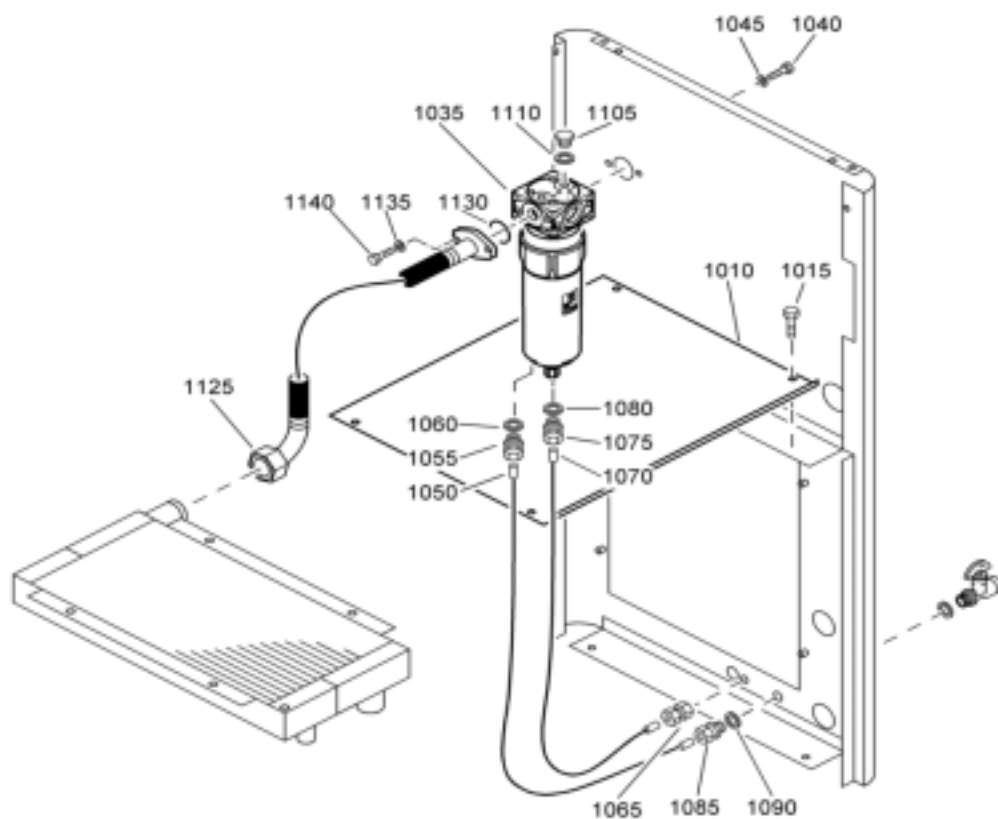
Regulating system - WorkPlace



| Ref. | Partnumber | Qty | Name | Remarks | Ref. | Partnumber | Qty | Name | Remarks |
|------|--------------------------------------------|-----|-------------------------------------------------|---------|------|--------------|-----|--------------------------|---------|
| 1010 | 1089 0702 05 1089 0702 06 | 1 | Solenoid valve 110V/50Hz 115V/60Hz | | 1050 | 0129 3104 00 | 4 | Blind rivet CSA/UL | |
| | 0663 2104 83 | • 2 | O-ring | | 1100 | 1088 0031 30 | 1 | Connector | |
| 1011 | 1089 0702 82 | 1 | Adaptor | | 2010 | 0852 0010 15 | 1 | Ball valve | |
| 1015 | 1089 0574 55 | 1 | Temp.sensor | | 2015 | 0661 1000 44 | 1 | Seal washer | |
| 1020 | 1900 0710 01 | 1 | Regulator | | 2020 | | 1 | Adaptor NPT | |
| 1021 | 0147 1169 03 | 4 | Hexagon bolt | | | 0603 4100 25 | | | |
| 1022 | 0301 2315 00 | 4 | Washer | | 2025 | 0070 6002 04 | AR | Plastic tube | |
| 1025 | 1622 0005 42 | 1 | Wire harness | | 2030 | 0581 0000 33 | 1 | Coupling | |
| 1030 | | 1 | Thermostat | | 2035 | 0070 6002 05 | AR | Plastic tube | |
| | 1622 7064 01 | | 40°C | | 2040 | 1613 6532 01 | 1 | Oil can | |
| | 1622 7064 04 | | 60°C | | 2060 | | 1 | Adapter IEC CSA/UL | |
| | 1622 7064 03 | | 75°C | | | 1622 2818 00 | | | |
| 1035 | 1089 0575 54 | 1 | Press.transducer | | | 1622 2819 00 | | | |
| 1040 | 1088 1001 01 | 1 | Warning mark | | 2070 | 0697 9809 05 | 1 | Nut | |
| | | | | | 2075 | 1613 8892 00 | 1 | Cock | |

7

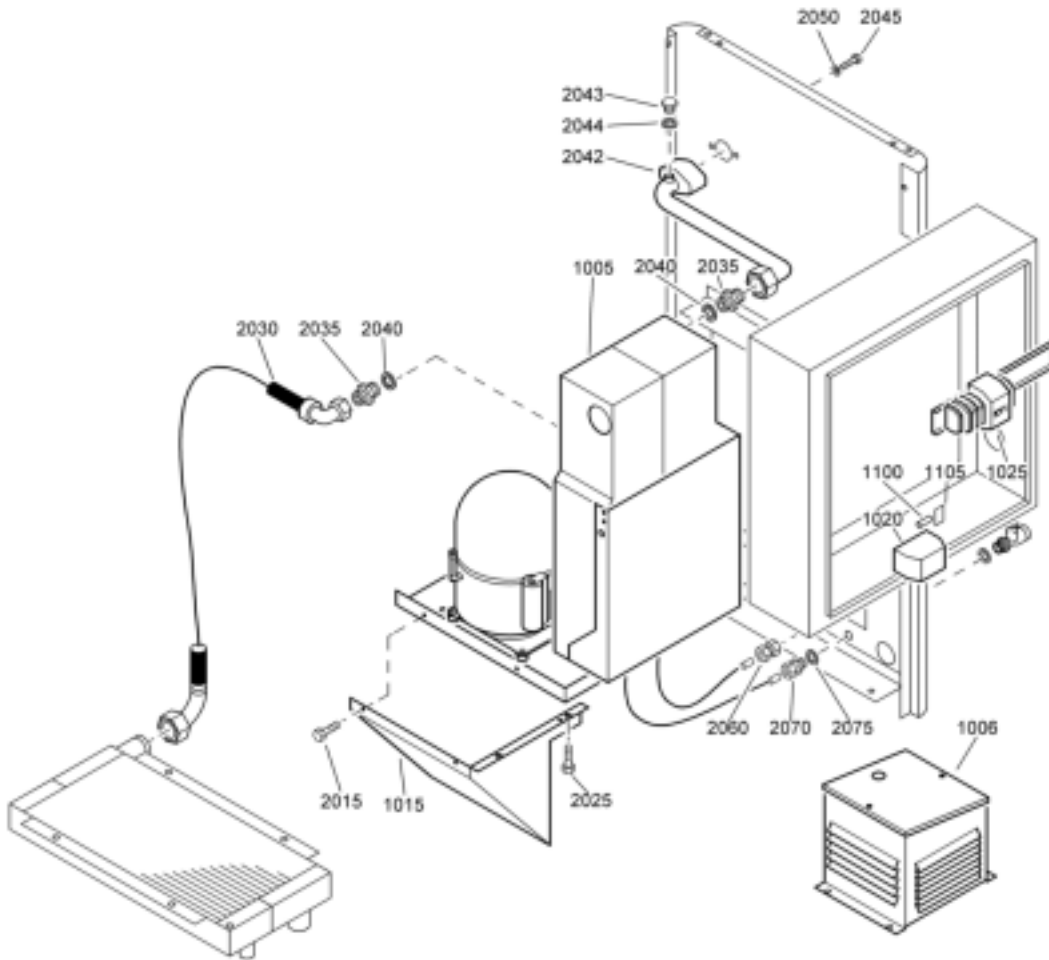
Air outlet - WorkPlace



61586_06

| Ref. | Partnumber | Qty | Name | Remarks | Ref. | Partnumber | Qty | Name | Remarks |
|------|--------------|-----|-----------------|---------|------|--------------|-----|-----------------------------------------------------------------------------------------------------------------------------------------------------------|---------|
| 1010 | 1622 0120 80 | 1 | Baffle assembly | 1) | 1085 | 0581 0000 33 | 1 | Coupling | |
| 1015 | 0147 1963 08 | 4 | Hexagon bolt | | 1090 | 0653 1046 00 | 1 | Flat gasket | |
| 1035 | 1613 8224 80 | 1 | WSD 25 | | 1105 | 0686 3716 01 | 1 | Hexagon plug | |
| | 2901 0712 00 | • 1 | Drain valve kit | | 1110 | 0661 1000 38 | 1 | Seal washer | |
| | 2901 0748 00 | • 1 | Separation kit | | 1125 | 1622 0074 00 | 1 | Hose assembly | |
| 1040 | 0147 1961 84 | 2 | Hexagon bolt | | 1130 | 0663 3133 00 | 2 | O-ring | |
| 1045 | 0301 2335 00 | 2 | Washer | | 1135 | 0301 2335 00 | 2 | Washer | |
| 1050 | 0070 6002 05 | AR | Plastic tube | | 1140 | 0147 1326 03 | 2 | Hexagon bolt | |
| 1055 | 0581 0000 35 | 1 | Coupling | | | | | | |
| 1060 | 0661 1000 38 | 2 | Seal washer | | | | | | |
| 1065 | 0581 0000 55 | 1 | Pipe coupling | | | | | | |
| 1070 | 0070 6002 04 | AR | Plastic tube | | | | | | |
| 1075 | 0581 0000 34 | 1 | Coupling | | | | | | |
| 1080 | 0661 1000 38 | 2 | Seal washer | | | | | | |
| | | | | | 1) | | | Lined with / Bekleed met / Beklädd med / Ausgekleidet mit / Garnir de / Rivestido de / Allineato con / Foret med / Revestido com / Kledd med / Vuorattu : | |
| | | | | | | | | Foam: 0395 6001 66 (AR) 25 x 2040 x 1650 | |

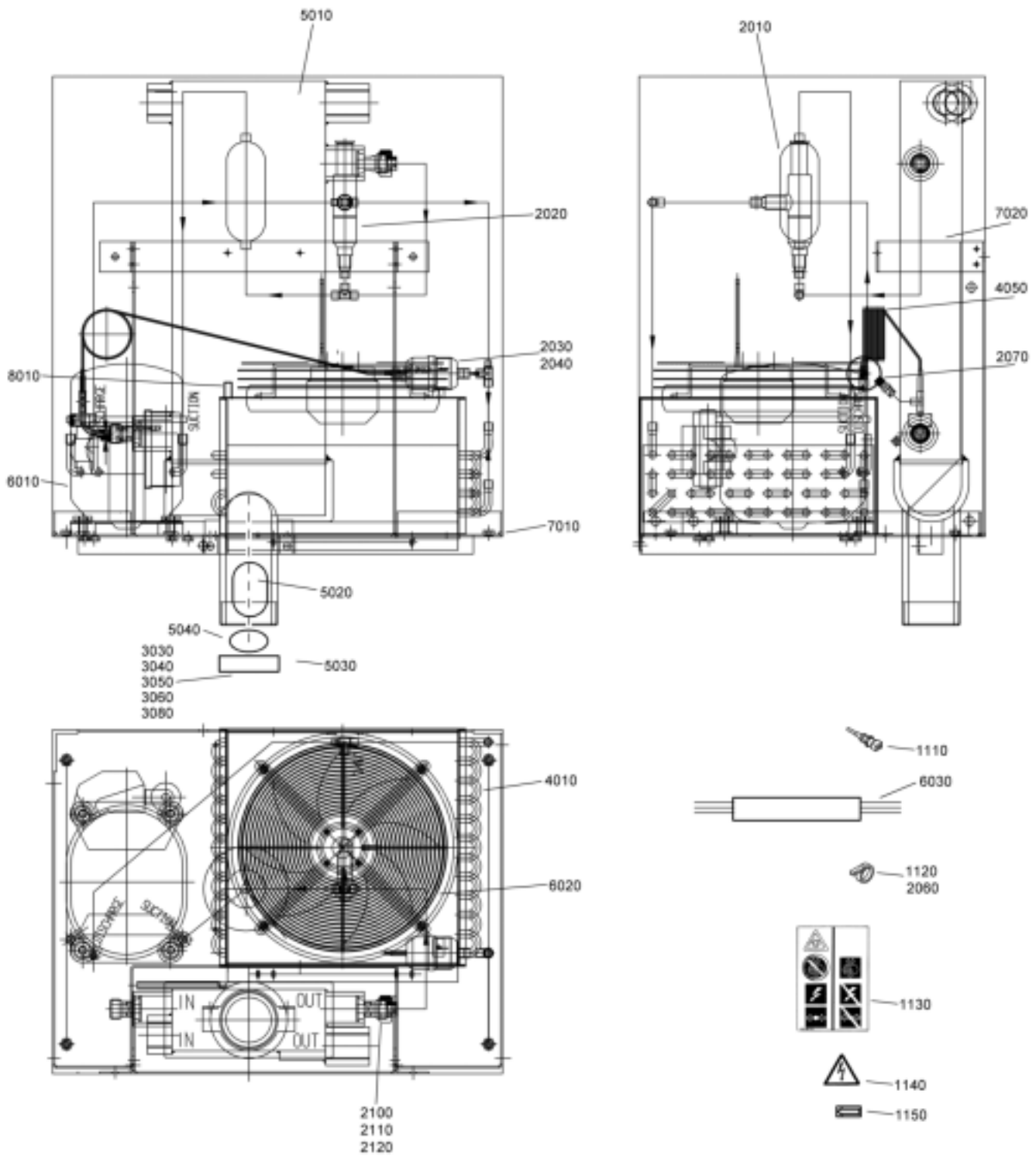
Air outlet - WorkPlace FF



81587_06

| Ref. | Part number | Qty | Name | Remarks | Ref. | Part number | Qty | Name | Remarks |
|------|--------------|-----|-------------------------------|---------|------|--------------|-----|-------------------|---------|
| 1005 | <<<< >>>> | 1 | Air dryer | | 1025 | <<<< >>>> | 1 | Dryer rail | |
| 1006 | | 1 | Trafokit | | 2015 | 1619 2765 01 | 3 | Screw | |
| | 1603 0721 01 | | ID44 380-440-460-575V/60Hz | | 2025 | 1619 2766 00 | 4 | Bolt | |
| | 1603 0721 03 | | ID44-66-77 380-690V/50Hz | | 2030 | 1622 0073 00 | 1 | Hose assembly | |
| | 1603 0721 05 | | ID44-66-77 400V | | 2035 | 2250 4983 00 | 2 | Nipple | |
| | 1603 0721 04 | | ID44-66-77 400-415V/60Hz | | 2040 | 0661 1000 44 | 2 | Seal washer | |
| | 1603 0721 00 | | ID44-66-77 500V | | 2042 | 1622 0076 10 | 1 | Pipe | |
| | 1603 0721 02 | | ID66-77 380-440-460-575V/60Hz | | 2043 | 0686 3716 01 | 1 | Hexagon plug | |
| 1015 | | 1 | Baffle | | 2044 | 0661 1000 38 | 1 | Seal washer | |
| | 1622 0134 00 | | GA 11+ | | 2045 | 0147 1961 84 | 2 | Hexagon bolt | |
| | 1622 0134 00 | | GA 15+ | | 2050 | 0300 0274 34 | 2 | Washer | |
| | 1622 0134 00 | | GA 18+ | | 2060 | 0581 0000 55 | 1 | Pipe coupling | |
| | 1622 0134 00 | | GA 22+ | | 2070 | 0581 0000 33 | 1 | Coupling | |
| | 1622 0135 00 | | GA 30 | | 2075 | 0653 1046 00 | 1 | Flat gasket | |

9

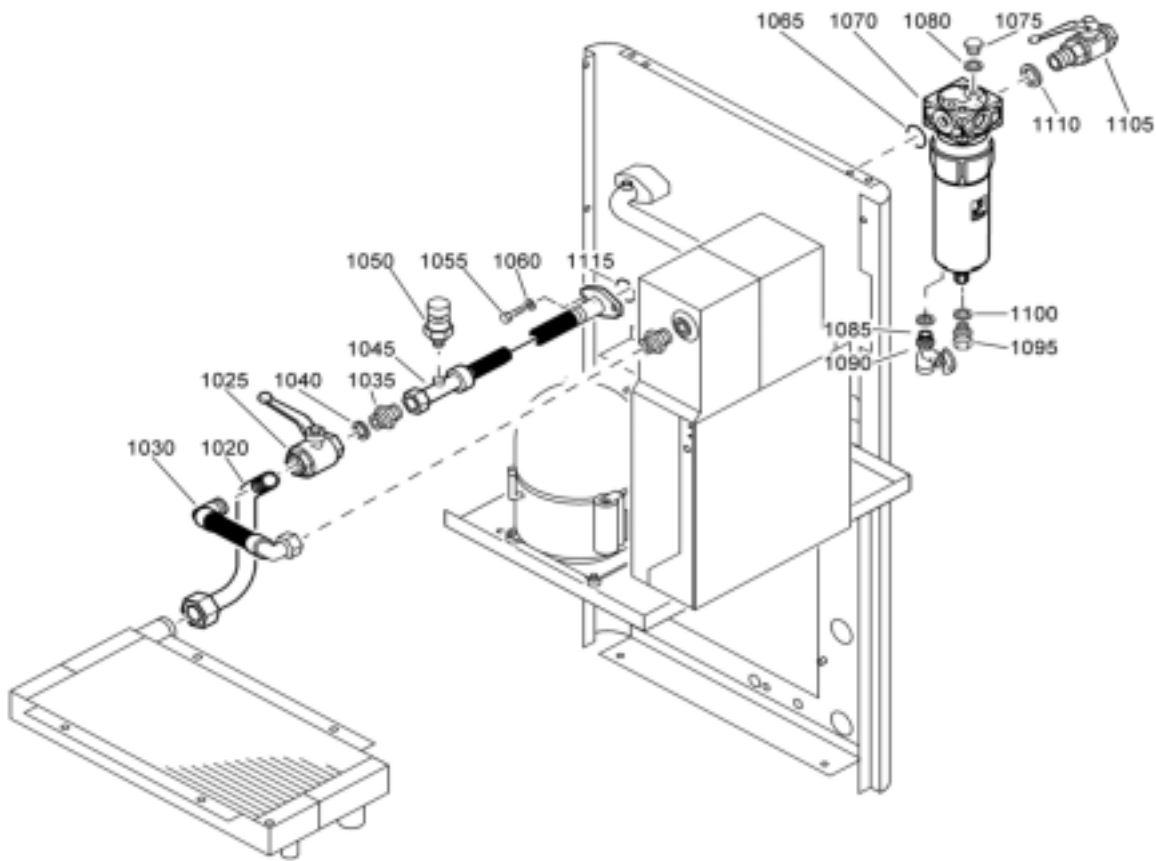


61115_17

Air dryer

| Ref. | Partnumber | Qty | Name | Remarks | Ref. | Partnumber | Qty | Name | Remarks |
|-------|---------------------|----------|------------------------------|---------|-------------|---------------------|----------|----------------------------|---------|
| | | 1 | Air dryer | | 5010 | | 1 | Heat exchanger | |
| | 8092 3062 82 | | GA11+200-220V/50Hz JPN | | | 1617 2491 00 | | GA 11+ | |
| | 8092 3060 81 | | GA11+200-220V/60Hz CSA/UL | | | 1617 2491 00 | | GA 15+ | |
| | 8092 3060 80 | | GA11+230V/50Hz | | | 1617 2492 00 | | GA 18+ | |
| | 8092 3062 82 | | GA15+200-220V/50Hz JPN | | | 1617 2492 00 | | GA 22+ | |
| | 8092 3060 81 | | GA15+200-220V/60Hz CSA/UL | | 5020 | 1613 9227 80 | 1 | GA 30 | |
| | 8092 3060 80 | | GA15+230V/50Hz | | | 2901 0712 00 | 1 | Drain assy | |
| | 8092 3061 82 | | GA18+200-220V/50Hz JPN | | 5030 | 1617 2372 00 | 1 | Drain valve kit | |
| | 8092 3061 81 | | GA18+200-220V/60Hz CSA/UL | | 5040 | 0663 7137 00 | 1 | Connection drain | |
| | 8092 3061 80 | | GA18+230V/50Hz | | 6010 | | 1 | O-ring | |
| | 8092 3061 82 | | GA22+200-220V/50Hz JPN | | | 1617 1483 06 | 1 | Refrig.compressor | |
| | 8092 3061 81 | | GA22+200-220V/60Hz CSA/UL | | | 1617 1483 07 | | GA 11+200-220V/50Hz JPN | |
| | 8092 3061 80 | | GA22+230V/50Hz | | | | | GA 11+200-220V/60Hz | |
| | 8092 3062 82 | | GA30 200-220V/50Hz JPN | | | 1617 1483 05 | | CSA/UL | |
| | 8092 3062 81 | | GA30 200-220V/60Hz CSA/UL | | | 1617 1494 20 | | GA 11+230V/50Hz | |
| | 8092 3062 80 | | GA30 230V/50Hz | | | 1617 1483 06 | | GA 11+440V/60Hz CSA/UL | |
| 1 110 | 1617 3077 81 | 1 | Temp. sensor | | | 1617 1483 06 | | GA 15+200-220V/50Hz JPN | |
| 1 120 | 1088 1301 01 | 8 | Cable tie | | | 1617 1483 07 | | GA 15+200-220V/60Hz | |
| 1 130 | 1079 9901 09 | 1 | Decal | | | 1617 1483 05 | | CSA/UL | |
| 1 140 | 1088 1001 01 | 1 | Warning mark | | | 1617 1494 20 | | GA 11+440V/60Hz CSA/UL | |
| 1 150 | 1617 2385 00 | 1 | Rotation arrow | | | 1617 1483 06 | | GA 15+200-220V/50Hz JPN | |
| 2010 | 1617 1505 02 | 1 | Accumulator | | | 1617 1483 07 | | GA 15+200-220V/60Hz | |
| 2020 | 1617 1524 01 | 1 | Hot gas bypass valve | | | 1617 1483 07 | | CSA/UL | |
| 2030 | 1617 1322 02 | 1 | Filter-dryer | | | 1617 1483 05 | | GA 15+230V/50Hz | |
| 2040 | 0348 0110 03 | 1 | Anchor | | | 1617 1494 20 | | GA 15+440V/60Hz CSA/UL | |
| 2060 | 0348 0101 13 | 1 | Cable tie | | | 1617 1494 14 | | GA 18+200-220V/50Hz JPN | |
| 2070 | 1619 5563 02 | 1 | Schrädervalue | | | 1617 1494 03 | | GA 18+200-220V/60Hz | |
| 2 100 | 1617 0056 00 | 1 | Sleeve | | | 1617 1494 01 | | CSA/UL | |
| 2 110 | 1617 0057 00 | 2 | Ring | | | 1617 1494 01 | | GA 18+230V/50Hz | |
| 2 120 | 1617 0058 00 | 1 | Nut | | | 1617 1494 19 | | GA 18+440V/60Hz CSA/UL | |
| 3030 | 0581 0000 35 | 1 | Straight coupling | | | 1617 1494 19 | | GA 22+200-220V/50Hz JPN | |
| 3040 | 0661 1000 25 | 2 | Seal washer | | | 1617 1494 03 | | GA 22+200-220V/60Hz | |
| 3050 | 0070 6002 05 | AR | Plastic tube | | | 1617 1494 01 | | CSA/UL | |
| 3060 | 0070 6002 04 | AR | Plastic tube | | | 1617 1494 16 | | GA 22+230V/50Hz | |
| 3080 | 0581 0000 34 | 1 | Straight coupling | | | 1617 1494 19 | | GA 22+440V/60Hz CSA/UL | |
| 4010 | | 1 | Condensor | | | 1617 1494 16 | | GA 30 230V/50Hz | |
| | 1617 2283 00 | | GA 11+ | | | 1617 1494 16 | | GA 30 200-220V/60Hz CSA/UL | |
| | 1617 2283 00 | | GA 15+ | | | 1617 1494 17 | | GA 30 200-220V/50Hz JPN | |
| | 1617 2288 00 | | GA 18+ | | | 6020 | 1 | Fan assy | |
| | 1617 2288 00 | | GA 22+ | | | 1617 2770 81 | | 230V/50Hz | |
| | 1617 2295 00 | | GA 30 | | | 1617 2770 82 | | 200-220V/60Hz CSA/UL | |
| 4050 | | 1 | Cappillary tube assy | | | 1617 2770 84 | | 440V/60Hz CSA/UL | |
| | 1617 1415 93 | | GA 11+ | | | 6030 | 1 | Wiring | |
| | 1617 1415 93 | | GA 15+ | | | 1617 3092 00 | | GA 11+ | |
| | 1617 1415 94 | | GA 18+ | | | 1617 3093 00 | | GA 11+ CSA/UL | |
| | 1617 1415 94 | | GA 22+ | | | 1617 3092 00 | | GA 15+ | |
| | 1617 1415 95 | | GA 30 | | | 1617 3093 00 | | GA 15+ CSA/UL | |
| | | | | | | 1617 3094 00 | | GA 18+ | |
| | | | | | | 1617 3095 00 | | GA 18+ CSA/UL | |
| | | | | | | 1617 3094 00 | | GA 22+ | |
| | | | | | | 1617 3095 00 | | GA 22+ CSA/UL | |
| | | | | | | 1617 3095 00 | | GA 30 | |
| | | | | | | 1617 3096 00 | | GA 30 CSA/UL | |
| | | | | | | 1617 3097 00 | | | |
| | | | | | 7010 | 1617 2308 00 | 1 | Frame | |
| | | | | | 7020 | 1617 2309 00 | 1 | Bracket | |
| | | | | | 8010 | 1089 9214 26 | 1 | Fan switch | |

10

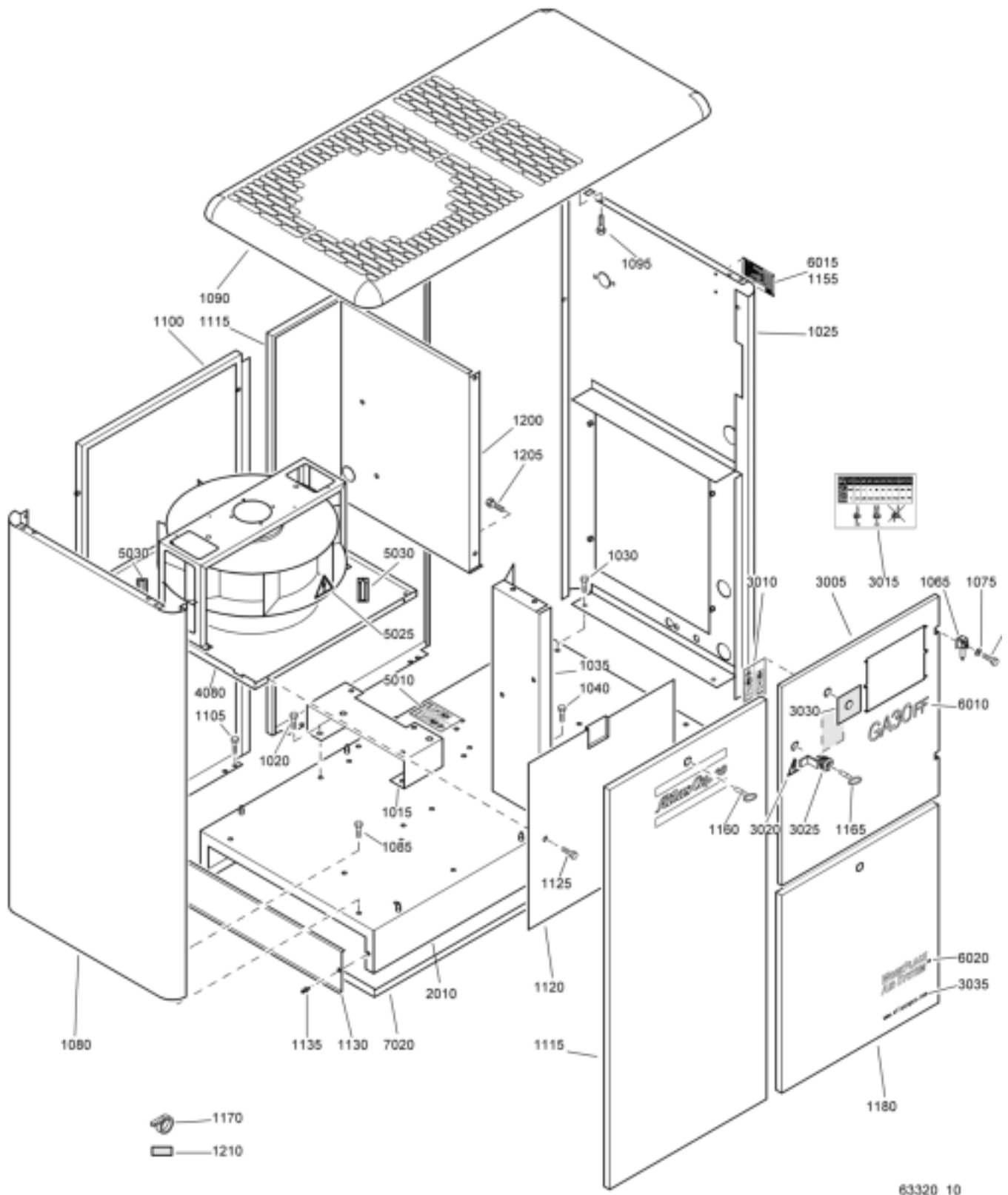


61592_03

By-pass dryer - WorkPlace

| Ref. | Partnumber | Qty | Name | Remarks | Ref. | Partnumber | Qty | Name | Remarks |
|------|---------------------|----------|---------------------|---------|------|--------------|-----|--------------|---------|
| | 8092 2455 24 | 1 | Dryer bypass | | 1070 | 1613 8224 80 | • 1 | WSD 25 | |
| 1020 | 1622 0143 00 | • 1 | Pipe | | 1075 | 0686 3716 01 | • 2 | Hexagon plug | |
| 1025 | 1613 7764 01 | • 1 | Ball valve | | 1080 | 0661 1000 38 | • 2 | Seal washer | |
| 1030 | 1622 0142 00 | • 1 | Hose assembly | | 1085 | 0605 8300 35 | • 1 | Bushing | |
| 1035 | 2250 4983 00 | • 1 | Nipple | | 1090 | 1619 7336 00 | • 1 | Cock | |
| 1040 | 0661 1000 44 | • 1 | Seal washer | | 1095 | 0581 0000 35 | • 1 | Coupling | |
| 1045 | 1622 0141 00 | • 1 | Hose assembly | | 1100 | 0661 1000 38 | • 1 | Seal washer | |
| 1050 | 1089 0575 51 | • 1 | Press.transducer | | 1105 | 0852 0010 15 | • 1 | Ball valve | |
| 1055 | 0147 1325 03 | • 2 | Hexagon bolt | | 1110 | 0661 1000 44 | • 1 | Seal washer | |
| 1060 | 0301 2335 00 | • 2 | Washer | | 1115 | 0663 3129 00 | • 1 | O-ring | |
| 1065 | 0663 3133 00 | • 1 | O-ring | | | | | | |

11



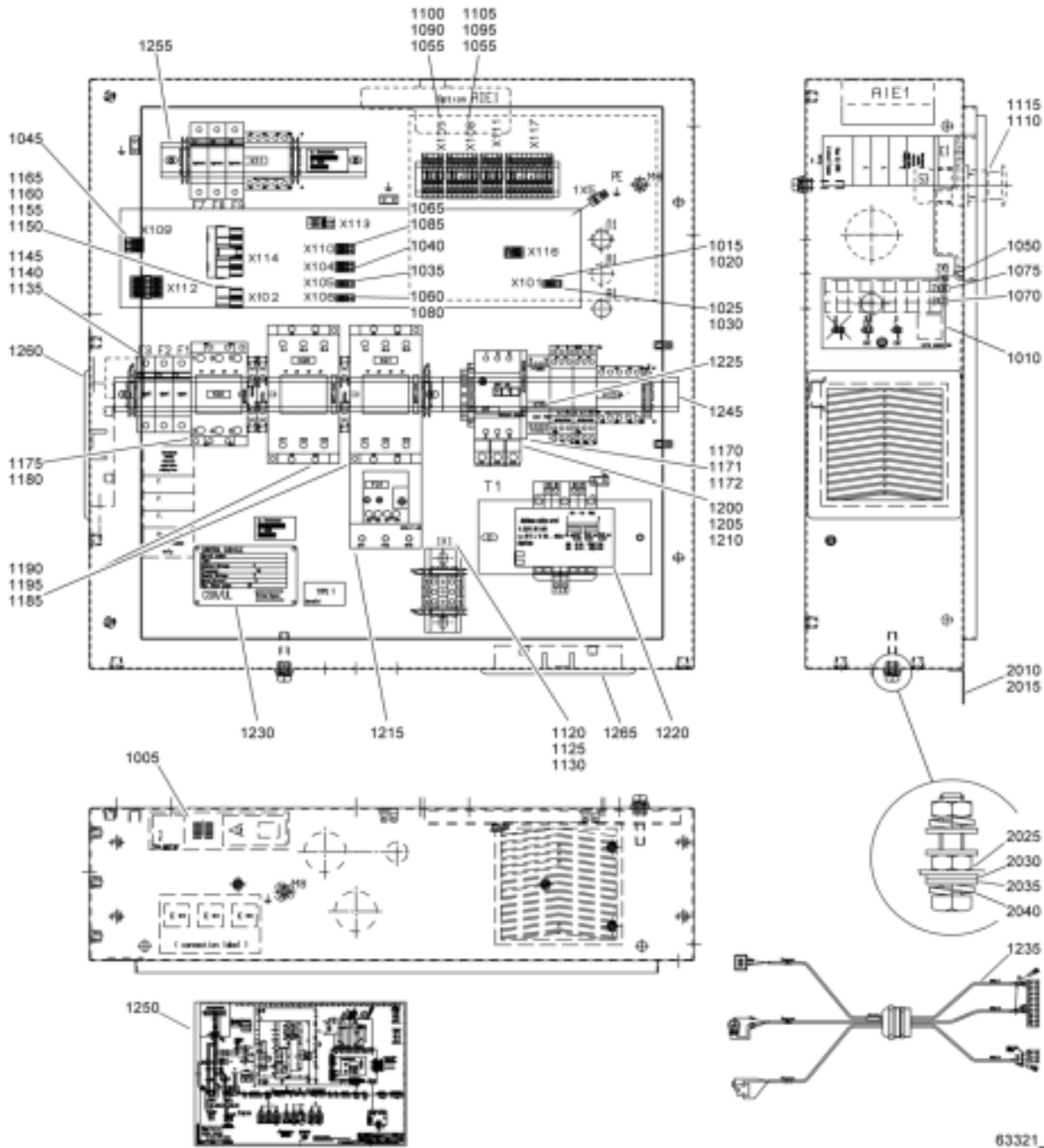
Bodywork

| Ref. | Partnumber | Qty | Name | Remarks | Ref. | Partnumber | Qty | Name | Remarks |
|-------------|---------------------|----------|---------------------------|---------|------|--------------|--------------|-----------------------------------------|-------------------------------------------------------------------------------------------------------------------------------------------------------------------------------------------------------------|
| 1015 | 1622 0136 00 | 1 | Support | | 3030 | 1613 9028 00 | • 1 | Decal | |
| 1020 | 1619 2766 00 | 4 | Bolt | | 3035 | 1079 9920 93 | • 1 | Label | |
| 1025 | 1622 0116 82 | 1 | Panel assembly 1) | | 4080 | | 1 | Fan assy | |
| | | • 1 | Label | | | 1622 0706 02 | | GA 11+ 230-400V/50Hz | |
| | 1079 9915 89 | | Automatic waterdrain | | | 1622 0103 11 | | GA 11+ 200-220V/60Hz CSA/UL | |
| | | • 1 | Label | | | 1622 0103 13 | | GA 11+ 220-230V/440-460/ 60Hz CSA/UL | |
| | 1079 9915 98 | | Manual waterdrain | | | 1622 0103 14 | | GA 11+ 575V/60Hz CSA/UL | |
| 1030 | 1619 2766 00 | 2 | Bolt | | | 1622 0706 02 | | GA 15+ 230-400V/50Hz | |
| 1035 | 1622 0363 00 | 1 | Support | | | 1622 0103 11 | | GA 15+ 200-220V/60Hz CSA/UL | |
| 1040 | 1619 2766 00 | 2 | Bolt | | | 1622 0103 13 | | GA 15+ 220-230V/440-460/ 60Hz CSA/UL | |
| 1050 | 0147 1963 08 | 4 | Hexagon bolt | | | 1622 0103 14 | | GA 15+ 575V/60Hz CSA/UL | |
| 1055 | 0147 1963 08 | 6 | Hexagon bolt | | | 1622 0706 02 | | GA 18+ 230-400V/50Hz | |
| 1065 | 1202 6400 00 | 2 | Hinge | | | 1622 0103 11 | | GA 18+ 200-220V/60Hz CSA/UL | |
| 1070 | 0147 1244 03 | 2 | Hexagon bolt | | | 1622 0103 13 | | GA 18+ 220-230V/440-460/ 60Hz CSA/UL | |
| 1075 | 0301 2321 00 | 2 | Washer | | | 1622 0103 14 | | GA 15+ 575V/60Hz CSA/UL | |
| 1080 | 1622 0115 80 | 1 | Panel assembly 1) | | | 1622 0706 02 | | GA 18+ 230-400V/50Hz | |
| 1085 | 1619 2766 00 | 2 | Bolt | | | 1622 0103 11 | | GA 18+ 200-220V/60Hz CSA/UL | |
| 1090 | 1622 0536 81 | 1 | Roof assembly 1) | | | 1622 0103 13 | | GA 18+ 220-230V/440-460/ 60Hz CSA/UL | |
| | 1613 9963 00 | • 4 | Corner | | | 1622 0103 14 | | GA 18+ 575V/60Hz CSA/UL | |
| | 0129 3174 00 | • 8 | Blind rivet | | | 1622 0706 02 | | GA 22+ 230-400V/50Hz | |
| 1095 | 0147 1963 08 | 5 | Hexagon bolt | | | 1622 0103 11 | | GA 22+ 200-220V/60Hz CSA/UL | |
| 1100 | 1622 0537 81 | 1 | Plate assembly 1) | | | 1622 0103 13 | | GA 22+ 220-230V/440-460/ 60Hz CSA/UL | |
| 1105 | 1619 2766 00 | 1 | Bolt | | | 1622 0103 14 | | GA 22+ 575V/60Hz CSA/UL | |
| 1110 | 0147 1963 08 | 4 | Hexagon bolt | | | 1622 0706 02 | | GA 30 230-400V/50Hz | |
| 1115 | 1622 0126 80 | 2 | Panel assembly 1) | | | 1622 0103 22 | | GA 30 220-230/440-460V/60Hz CSA/UL | |
| | 1513 0431 00 | • 1 | Door lock | | | 1622 0103 33 | | GA 30 575V/60Hz CSA/UL | |
| | 1616 2987 00 | • 2 | Plug | | | 1622 0103 34 | | GA 30 575V/60Hz CSA/UL | |
| | 0690 1116 01 | • 1 | House mark | | | 5010 | 1079 9903 48 | 2 | Warning label |
| 1120 | 1622 0119 80 | 1 | Panel assembly 1) | | | 5025 | 1088 1001 01 | 2 | Warning mark |
| | 1079 9901 18 | • 1 | Warning label | | | 5030 | 1503 0786 00 | 2 | Rotation arrow |
| | 1619 2665 00 | • AR | Seal | | | 6010 | | 1 | Decal |
| 1125 | 1619 2766 00 | 2 | Bolt | | | 1622 4631 47 | | | GA11+ |
| 1130 | 1622 0114 80 | 2 | Panel assembly 1) | | | 1622 4631 48 | | | GA11+ FF |
| 1135 | 1615 8384 00 | 4 | Rivet | | | 1622 4631 49 | | | GA15+ |
| 1140 | 0266 2110 00 | 1 | Nut | | | 1622 4631 50 | | | GA15+ FF |
| 1145 | 0333 3227 00 | 1 | Lock washer | | | 1622 4631 11 | | | GA18+ |
| 1150 | 0301 2335 00 | 1 | Washer | | | 1622 4631 12 | | | GA18+ FF |
| 1155 | 0129 3103 00 | 4 | Blind rivet | | | 1622 4631 13 | | | GA22+ |
| 1160 | 1089 9068 01 | 2 | Key | | | 1622 4631 14 | | | GA22+ FF |
| 1165 | 1089 9154 02 | 1 | Key | | | 1622 4631 23 | | | GA30 |
| 1170 | 1088 1301 02 | 1 | Cable strip | | | 1622 4631 24 | | | GA30 FF |
| 1175 | 0147 1963 08 | 4 | Hexagon bolt | | | 6015 | 1614 5933 00 | 1 | Data plate |
| 1180 | 1622 0397 80 | 1 | Door panel assy 1) | | | 1622 0395 00 | | | bar(e) |
| | 1616 2987 00 | • 1 | Plug | | | 6020 | 1613 9846 00 | 1 | Decal WorkPlace |
| | 1513 0431 00 | • 1 | Door lock | | | 7020 | 1622 0144 00 | 1 | Oil containing frame |
| 1200 | 1622 0535 80 | 1 | Baffle assembly 1) | | | | | | |
| 1205 | 0147 1963 08 | 2 | Hexagon bolt | | | | | | |
| 1210 | 1619 3843 00 | AR | Seal | | | | | | |
| 2010 | 1622 0113 10 | 1 | Frame | | | | | | |
| | 1622 0199 80 | 1 | Door assembly 1) | | | | | | |
| 3005 | 1622 0199 00 | • 1 | Door panel | | | | | | |
| 3010 | 1079 9903 48 | • 1 | Warning label | | | | | | |
| 3015 | 1079 9906 09 | • 1 | Label | | | | | | |
| 3020 | 1088 1001 03 | • 1 | Warning mark | | | | | | |
| 3025 | 1619 7705 00 | • 1 | Lock | | | | | | |
| | | | | | 1) | | | | Lined with / Bekleed met / Beklädd med / Ausgekleidet mit / Garnir de / Rivestido de / Allineato con / Foret med / Revestido com / Kledd med / Vuorattu : Foam: 0395 6001 66 (AR) 25 x 2040 x 1650 |

| Ref. | Part number | Qty | Name | Remarks | Ref. | Part number | Qty | Name | Remarks |
|-------|---------------------|-----|----------------------------|---------|-------|--------------|-----|----------------------------|---------|
| | 1900 2053 10 | | GA 22+ 440-460V/60Hz 3ph | | | 1089 0612 24 | | GA 30 380V/50Hz HAV | |
| | 1900 2053 08 | | GA 22+ 500V/50Hz | | | 1089 0612 23 | | GA 30 400V/50Hz HAV | |
| | 1900 2053 32 | | GA 30 220-230V/50-60Hz HAV | | | 1089 0612 24 | | GA 30 440-460V/60Hz HAV | |
| | 1900 2053 36 | | GA 30 380V/50Hz HAV | | | 1089 0612 23 | | GA 30 500V/50Hz HAV | |
| | 1900 2053 25 | | GA 30 400V/50Hz HAV | | 1 150 | 1089 0700 01 | • 1 | Connector | |
| | 1900 2053 36 | | GA 30 440-460V/60Hz HAV | | 1 155 | 1089 0700 02 | • 1 | Connector | |
| | 1900 2053 28 | | GA 30 500V/50Hz HAV | | 1 160 | 1089 0700 03 | • 8 | Connector pin | |
| 1 005 | 1079 9901 68 | • 1 | Warning label | | 1 165 | 1089 0700 04 | • 8 | Connector socket | |
| 1 010 | 1079 9906 09 | • 1 | Label | | 1 170 | 1089 9511 15 | • 1 | Interface relay | |
| 1 020 | 1088 0015 16 | • 2 | Connector pin | | 1 171 | 1089 9511 16 | • 1 | Interface relay | |
| 1 025 | 1088 0015 22 | • 1 | Connector plug | | 1 172 | 1089 9511 51 | • 1 | Interface relay | |
| 1 030 | 1088 0015 36 | • 2 | Connector socket | | 1 175 | | • 1 | Contact block | |
| 1 035 | 1088 0031 02 | • 2 | Connector | | | 1089 9415 09 | | GA 11+ 220-230V/50-60Hz | |
| 1 040 | 1088 0031 03 | • 1 | Connector | | | 1089 9415 09 | | GA 11+ 220V/50-60Hz HAV | |
| 1 045 | 1088 0031 04 | • 1 | Connector | | | 1089 9415 14 | | GA 11+ 380V/50-60Hz | |
| 1 050 | 1088 0031 13 | • 1 | Connector | | | 1089 9415 14 | | GA 11+ 400V/50Hz | |
| 1 055 | 1088 0031 18 | • 4 | Adaptor | | | 1089 9415 14 | | GA 11+ 440-460V/60Hz 3ph | |
| 1 060 | 1088 0031 22 | • 2 | Connector | | | 1089 9415 14 | | GA 11+ 500V/50Hz | |
| 1 065 | 1088 0031 23 | • 1 | Connector | | | 1089 9415 09 | | GA 15+ 200V/50-60Hz HAV | |
| 1 070 | 1088 0031 29 | • 1 | Connector | | | 1089 9415 09 | | GA 15+ 220-230V/60Hz | |
| 1 075 | 1088 0031 49 | • 1 | Connector | | | 1089 9415 09 | | GA 15+ 230V/50Hz | |
| 1 080 | 1088 0031 82 | • 2 | Connector | | | 1089 9415 09 | | GA 15 380V/50-60Hz | |
| 1 085 | 1088 0031 83 | • 1 | Connector | | | 1089 9415 09 | | GA 15+ 400V/50Hz | |
| 1 090 | 1088 0031 84 | • 1 | Connector | | | 1089 9415 14 | | GA 15+ 400-460V/60Hz 3ph | |
| 1 095 | 1088 0031 86 | • 1 | Connector | | | 1089 9415 14 | | GA 15+ 500V/50Hz | |
| 1 100 | 1088 0037 04 | • 1 | Connector | | | 1089 9415 09 | | GA 18+ 200V/50Hz HAV | |
| 1 105 | 1088 0037 06 | • 1 | Connector | | | 1089 9415 09 | | GA 18+ 200V/60Hz | |
| 1 110 | 1089 0362 50 | • 2 | Contact block | | | 1089 9415 09 | | GA 18+ 220-230V/50-60Hz | |
| 1 115 | 1089 0362 51 | • 1 | Push button | | | 1089 9415 09 | | GA 18+ 380V/50-60Hz | |
| 1 120 | 1089 0506 27 | • 1 | Terminal | | | 1089 9415 09 | | GA 18+ 400V/50Hz | |
| 1 125 | 1089 0506 30 | • 3 | End bracket | | | 1089 9415 09 | | GA 18+ 400-460V/60Hz 3ph | |
| 1 130 | 1089 0506 75 | • 1 | Terminal | | | 1089 9415 09 | | GA 18+ 500V/50Hz | |
| 1 135 | 1089 0612 01 | • 3 | Fuse holder | | | 1089 9415 09 | | GA 22+ 200V/50-60Hz HAV | |
| 1 140 | 1089 0612 22 | • 1 | Fuse | | | 1089 9415 09 | | GA 22+ 220-230V/60Hz | |
| 1 145 | | • 2 | Fuse | | | 1089 9415 09 | | GA 22+ 230V/50Hz HAV | |
| | 1089 0612 23 | | GA 11+ 220-230V/50-60Hz | | | 1089 9415 09 | | GA 22+ 380V/50-60Hz | |
| | 1089 0612 24 | | GA 11+ 220V/50-60Hz HAV | | | 1089 9415 09 | | GA 22+ 400V/50Hz | |
| | 1089 0612 23 | | GA 11+ 380V/50-60Hz | | | 1089 9415 09 | | GA 22+ 440-460V/60Hz 3ph | |
| | 1089 0612 23 | | GA 11+ 400V/50Hz | | | 1089 9415 09 | | GA 22+ 500V/50Hz | |
| | 1089 0612 23 | | GA 11+ 440-460V/60Hz 3ph | | | 1089 9415 09 | | GA 30 220-230V/50-60Hz HAV | |
| | 1089 0612 23 | | GA 11+ 500V/50Hz | | | 1089 9415 09 | | GA 30 380V/50Hz HAV | |
| | 1089 0612 24 | | GA 15+ 200V/50-60Hz HAV | | | 1089 9415 09 | | GA 30 400V/50Hz HAV | |
| | 1089 0612 23 | | GA 15+ 220-230V/60Hz | | | 1089 9415 09 | | GA 30 440-460V/60Hz HAV | |
| | 1089 0612 23 | | GA 15+ 230V/50Hz | | | 1089 9415 09 | | GA 30 500V/50Hz HAV | |
| | 1089 0612 23 | | GA 15+ 380V/50-60Hz | | 1 180 | | • 1 | Contact | |
| | 1089 0612 23 | | GA 15+ 400V/50Hz | | | 1089 9415 26 | | GA 11+ 220-230V/50-60Hz | |
| | 1089 0612 23 | | GA 15+ 400-460V/60Hz 3ph | | | 1089 9415 34 | | GA 11+ 220V/50-60Hz HAV | |
| | 1089 0612 23 | | GA 15+ 500V/50Hz | | | 1089 9438 34 | | GA 11+ 380V/50-60Hz | |
| | 1089 0612 24 | | GA 18+ 200V/50Hz HAV | | | 1089 9438 34 | | GA 11+ 400V/50Hz | |
| | 1089 0612 24 | | GA 18+ 200V/60Hz | | | 1089 9438 34 | | GA 11+ 440-460V/60Hz 3ph | |
| | 1089 0612 24 | | GA 18+ 220-230V/50-60Hz | | | 1089 9438 34 | | GA 11+ 500V/50Hz | |
| | 1089 0612 23 | | GA 18+ 380V/50-60Hz | | | 1089 9415 34 | | GA 15+ 200V/50-60Hz HAV | |
| | 1089 0612 23 | | GA 18+ 400V/50Hz | | | 1089 9415 26 | | GA 15+ 220-230V/60Hz | |
| | 1089 0612 23 | | GA 18+ 400-460V/60Hz 3ph | | | 1089 9415 26 | | GA 15+ 230V/50Hz | |
| | 1089 0612 23 | | GA 18+ 500V/50Hz | | | 1089 9415 24 | | GA 15+ 380V/50-60Hz | |
| | 1089 0612 24 | | GA 22+ 200V/50-60Hz HAV | | | 1089 9415 24 | | GA 15+ 400V/50Hz | |
| | 1089 0612 24 | | GA 22+ 220-230V/60Hz | | | 1089 9438 34 | | GA 15+ 400-460V/60Hz 3ph | |
| | 1089 0612 24 | | GA 22+ 230V/50Hz HAV | | | 1089 9438 34 | | GA 15+ 500V/50Hz | |
| | 1089 0612 23 | | GA 22+ 380V/50-60Hz | | | 1089 9415 34 | | GA 18+ 200V/50Hz HAV | |
| | 1089 0612 23 | | GA 22+ 400V/50Hz | | | 1089 9415 34 | | GA 18+ 200V/60Hz | |
| | 1089 0612 23 | | GA 22+ 440-460V/60Hz 3ph | | | 1089 9415 34 | | GA 18+ 220-230V/50-60Hz | |
| | 1089 0612 23 | | GA 22+ 500V/50Hz | | | 1089 9415 26 | | GA 18+ 380V/50-60Hz | |
| | 1089 0612 24 | | GA 30 220-230V/50-60Hz HAV | | | 1089 9415 24 | | GA 18+ 400V/50Hz | |

12

Start cubicle - Star / Delta - IEC



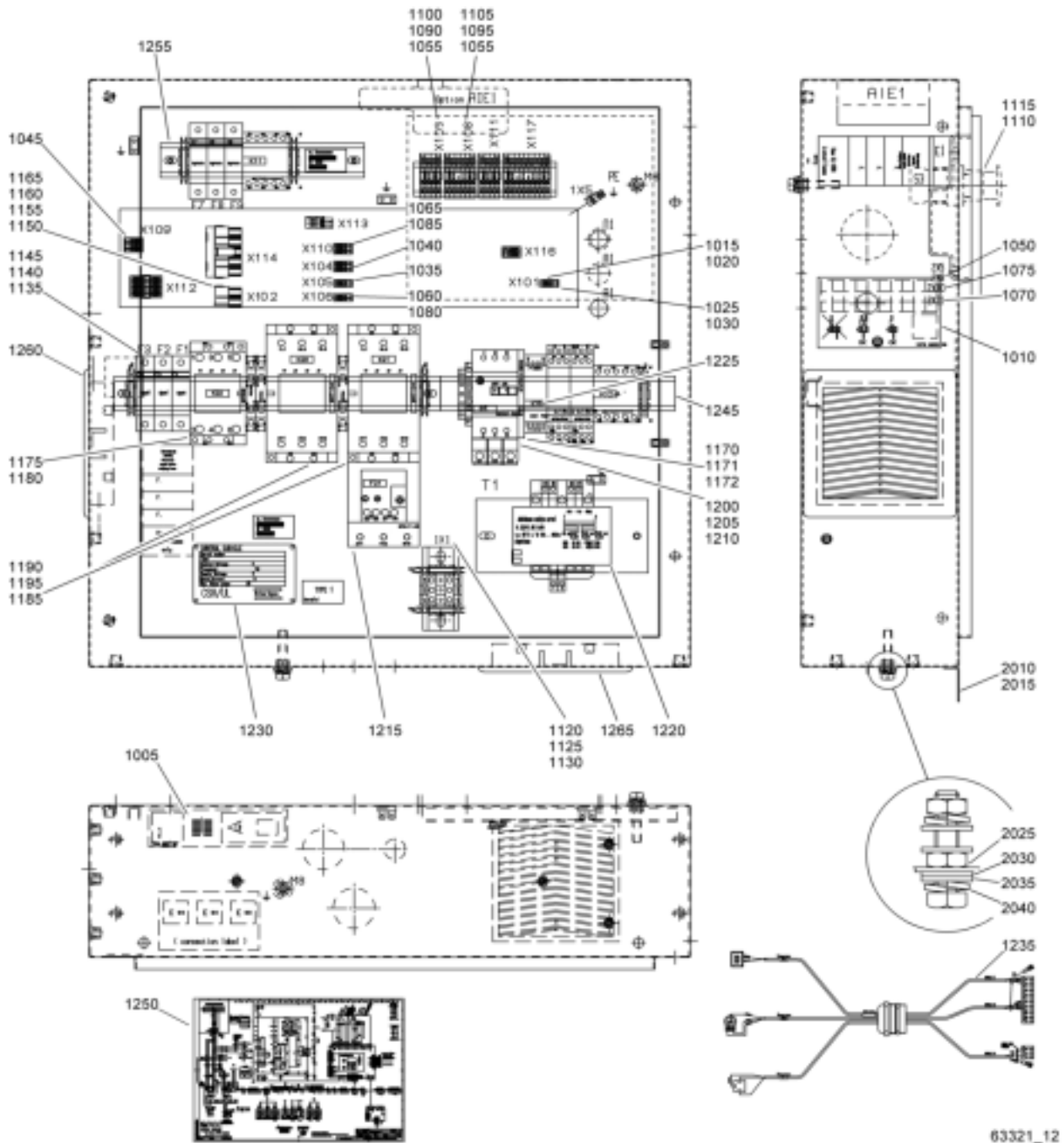
63321_12

| Ref. | Partnumber | Qty | Name | Remarks | Ref. | Partnumber | Qty | Name | Remarks |
|------|--------------|-----|----------------------------|---------|-------|--------------|-----|--------------------------|---------|
| | 1089 9415 24 | | GA 18+ 400-460V/60Hz 3ph | | | 1089 9415 34 | | GA 30 440-460V/60Hz HAV | |
| | 1089 9415 24 | | GA 18+ 500V/50Hz | | | 1089 9415 34 | | GA 30 500V/50Hz HAV | |
| | 1089 9415 34 | | GA 22+ 200V/50-60Hz HAV | | 1 185 | • 2 | | Contactors | |
| | 1089 9415 34 | | GA 22+ 220-230V/60Hz | | | 1089 9415 34 | | GA 11+ 220-230V/50-60Hz | |
| | 1089 9415 34 | | GA 22+ 230V/50Hz HAV | | | 1089 9415 44 | | GA 11+ 220V/50-60Hz HAV | |
| | 1089 9415 26 | | GA 22+ 380V/50-60Hz | | | 1089 9415 26 | | GA 11+ 380V/50-60Hz | |
| | 1089 9415 26 | | GA 22+ 400V/50Hz | | | 1089 9415 24 | | GA 11+ 400V/50Hz | |
| | 1089 9415 26 | | GA 22+ 440-460V/60Hz 3ph | | | 1089 9415 26 | | GA 11+ 440-460V/60Hz 3ph | |
| | 1089 9415 24 | | GA 22+ 500V/50Hz | | | 1089 9415 24 | | GA 11+ 500V/50Hz | |
| | 1089 9415 36 | | GA 30 220-230V/50-60Hz HAV | | | 1089 9415 44 | | GA 15+ 200V/50-60Hz HAV | |
| | 1089 9415 34 | | GA 30 380V/50Hz HAV | | | 1089 9415 34 | | GA 15+ 220-230V/60Hz | |
| | 1089 9415 26 | | GA 30 400V/50Hz HAV | | | 1089 9415 34 | | GA 15+ 230V/50Hz | |

| Ref. | Partnumber | Qty | Name | Remarks | Ref. | Partnumber | Qty | Name | Remarks |
|-------|--------------|-----|----------------------------|---------|-------|--------------|----------------|----------------------------|---------|
| | 1089 9415 26 | | GA 15+ 380V/50-60Hz | | | 1089 9416 05 | | GA 11+ 400V/50Hz | |
| | 1089 9415 26 | | GA 15+ 400V/50Hz | | | 1089 9416 05 | | GA 11+ 440-460V/60Hz 3ph | |
| | 1089 9415 26 | | GA 15+ 400-460V/60Hz 3ph | | | 1089 9416 05 | | GA 11+ 500V/50Hz | |
| | 1089 9415 26 | | GA 15+ 500V/50Hz | | | 1089 9362 04 | | GA 15+ 200V/50-60Hz HAV | |
| | 1089 9415 44 | | GA 18+ 200V/50Hz HAV | | | 1089 9416 93 | | GA 15+ 220-230V/60Hz | |
| | 1089 9415 44 | | GA 18+ 200V/60Hz | | | 1089 9416 93 | | GA 15+ 230V/50Hz | |
| | 1089 9415 36 | | GA 18+ 220-230V/50-60Hz | | | 1089 9416 05 | | GA 15+ 380V/50-60Hz | |
| | 1089 9415 34 | | GA 18+ 380V/50-60Hz | | | 1089 9416 05 | | GA 15+ 400V/50Hz | |
| | 1089 9415 26 | | GA 18+ 400V/50Hz | | | 1089 9416 05 | | GA 15+ 400-460V/60Hz 3ph | |
| | 1089 9415 26 | | GA 18+ 400-460V/60Hz 3ph | | | 1089 9416 05 | | GA 15+ 500V/50Hz | |
| | 1089 9415 26 | | GA 18+ 500V/50Hz | | | 1089 9362 04 | | GA 18+ 200V/50Hz HAV | |
| | 1089 9415 44 | | GA 22+ 200V/50-60Hz HAV | | | 1089 9362 04 | | GA 18+ 200V/60Hz | |
| | 1089 9415 44 | | GA 22+ 220-230V/60Hz | | | 1089 9416 93 | | GA 18+ 220-230V/50-60Hz | |
| | 1089 9415 44 | | GA 22+ 230V/50Hz HAV | | | 1089 9416 93 | | GA 18+ 380V/50-60Hz | |
| | 1089 9415 34 | | GA 22+ 380V/50-60Hz | | | 1089 9416 05 | | GA 18+ 400V/50Hz | |
| | 1089 9415 34 | | GA 22+ 400V/50Hz | | | 1089 9416 05 | | GA 18+ 400-460V/60Hz 3ph | |
| | 1089 9415 34 | | GA 22+ 440-460V/60Hz 3ph | | | 1089 9416 05 | | GA 18+ 500V/50Hz | |
| | 1089 9415 26 | | GA 22+ 500V/50Hz | | | 1089 9362 04 | | GA 22+ 200V/50-60Hz HAV | |
| | 1089 9415 45 | | GA 30 220-230V/50-60Hz HAV | | | 1089 9362 04 | | GA 22+ 220-230V/60Hz | |
| | 1089 9415 44 | | GA 30 380V/50Hz HAV | | | 1089 9362 04 | | GA 22+ 230V/50Hz HAV | |
| | 1089 9415 35 | | GA 30 400V/50Hz HAV | | | 1089 9416 93 | | GA 22+ 380V/50-60Hz | |
| | 1089 9415 44 | | GA 30 440-460V/60Hz HAV | | | 1089 9416 93 | | GA 22+ 400V/50Hz | |
| | 1089 9415 34 | | GA 30 500V/50Hz HAV | | | 1089 9416 93 | | GA 22+ 440-460V/60Hz 3ph | |
| 1 190 | 1089 9415 55 | • 1 | Contact block | | | 1089 9416 05 | | GA 22+ 500V/50Hz | |
| 1 195 | 1089 9415 56 | • 1 | Contact block | | | 1089 9362 04 | | GA 30 220-230V/50-60Hz HAV | |
| 1 200 | 1089 9416 01 | • 1 | Aux.contact block | | | 1089 9362 04 | | GA 30 380V/50Hz HAV | |
| 1 205 | | • 1 | Circuit breaker | | | 1089 9416 93 | | GA 30 400V/50Hz HAV | |
| | 1089 9416 24 | | GA 11+ 220-230V/50-60Hz | | | 1089 9362 04 | | GA 30 440-460V/60Hz HAV | |
| | 1089 9416 24 | | GA 11+ 220V/50-60Hz HAV | | | 1089 9416 93 | | GA 30 500V/50Hz HAV | |
| | 1089 9416 21 | | GA 11+ 380V/50-60Hz | | 1 215 | • 1 | Overload relay | | |
| | 1089 9416 21 | | GA 11+ 400V/50Hz | | | 1089 9424 39 | | GA 11+ 220-230V/50-60Hz | |
| | 1089 9416 21 | | GA 11+ 440-460V/60Hz 3ph | | | 1089 9446 16 | | GA 11+ 220V/50-60Hz HAV | |
| | 1089 9416 21 | | GA 11+ 500V/50Hz | | | 1089 9424 29 | | GA 11+ 380V/50-60Hz | |
| | 1089 9416 24 | | GA 15+ 200V/50-60Hz HAV | | | 1089 9424 29 | | GA 11+ 400V/50Hz | |
| | 1089 9416 24 | | GA 15+ 220-230V/60Hz | | | 1089 9424 29 | | GA 11+ 440-460V/60Hz 3ph | |
| | 1089 9416 24 | | GA 15+ 230V/50Hz | | | 1089 9424 28 | | GA 11+ 500V/50Hz | |
| | 1089 9416 21 | | GA 15+ 380V/50-60Hz | | | 1089 9446 16 | | GA 15+ 200V/50-60Hz HAV | |
| | 1089 9416 21 | | GA 15+ 400V/50Hz | | | 1089 9424 39 | | GA 15+ 220-230V/60Hz | |
| | 1089 9416 21 | | GA 15+ 400-460V/60Hz 3ph | | | 1089 9424 39 | | GA 15+ 230V/50Hz | |
| | 1089 9416 21 | | GA 15+ 500V/50Hz | | | 1089 9424 31 | | GA 15+ 380V/50-60Hz | |
| | 1089 9416 24 | | GA 18+ 200V/50Hz HAV | | | 1089 9424 30 | | GA 15+ 400V/50Hz | |
| | 1089 9416 24 | | GA 18+ 200V/60Hz | | | 1089 9424 29 | | GA 15+ 400-460V/60Hz 3ph | |
| | 1089 9416 24 | | GA 18+ 220-230V/50-60Hz | | | 1089 9424 29 | | GA 15+ 500V/50Hz | |
| | 1089 9416 21 | | GA 18+ 380V/50-60Hz | | | 1089 9446 16 | | GA 18+ 200V/50Hz HAV | |
| | 1089 9416 21 | | GA 18+ 400V/50Hz | | | 1089 9446 16 | | GA 18+ 200V/60Hz | |
| | 1089 9416 21 | | GA 18+ 400-460V/60Hz 3ph | | | 1089 9424 41 | | GA 18+ 220-230V/50-60Hz | |
| | 1089 9416 21 | | GA 18+ 500V/50Hz | | | 1089 9424 39 | | GA 18+ 380V/50-60Hz | |
| | 1089 9416 24 | | GA 22+ 200V/50-60Hz HAV | | | 1089 9424 31 | | GA 18+ 400V/50Hz | |
| | 1089 9416 24 | | GA 22+ 220-230V/60Hz | | | 1089 9424 31 | | GA 18+ 400-460V/60Hz 3ph | |
| | 1089 9416 24 | | GA 22+ 230V/50Hz HAV | | | 1089 9424 31 | | GA 18+ 500V/50Hz | |
| | 1089 9416 21 | | GA 22+ 380V/50-60Hz | | | 1089 9446 16 | | GA 22+ 200V/50-60Hz HAV | |
| | 1089 9416 21 | | GA 22+ 400V/50Hz | | | 1089 9424 46 | | GA 22+ 220-230V/60Hz | |
| | 1089 9416 21 | | GA 22+ 440-460V/60Hz 3ph | | | 1089 9446 16 | | GA 22+ 230V/50Hz HAV | |
| | 1089 9416 21 | | GA 22+ 500V/50Hz | | | 1089 9424 39 | | GA 22+ 380V/50-60Hz | |
| | 1089 9416 26 | | GA 30 220-230V/50-60Hz HAV | | | 1089 9424 39 | | GA 22+ 400V/50Hz | |
| | 1089 9416 24 | | GA 30 380V/50Hz HAV | | | 1089 9424 39 | | GA 22+ 440-460V/60Hz 3ph | |
| | 1089 9416 23 | | GA 30 400V/50Hz HAV | | | 1089 9424 31 | | GA 22+ 500V/50Hz | |
| | 1089 9416 24 | | GA 30 440-460V/60Hz HAV | | | 1089 9424 48 | | GA 30 220-230V/50-60Hz HAV | |
| | 1089 9416 23 | | GA 30 500V/50Hz HAV | | | 1089 9446 16 | | GA 30 380V/50Hz HAV | |
| 1 210 | | • 1 | Supply terminal | | | 1089 9424 40 | | GA 30 400V/50Hz HAV | |
| | 1089 9416 93 | | GA 11+ 220-230V/50-60Hz | | | 1089 9446 16 | | GA 30 440-460V/60Hz HAV | |
| | 1089 9362 04 | | GA 11+ 220V/50-60Hz HAV | | | 1089 9424 39 | | GA 30 500V/50Hz HAV | |
| | 1089 9416 05 | | GA 11+ 380V/50-60Hz | | | | | | |

12

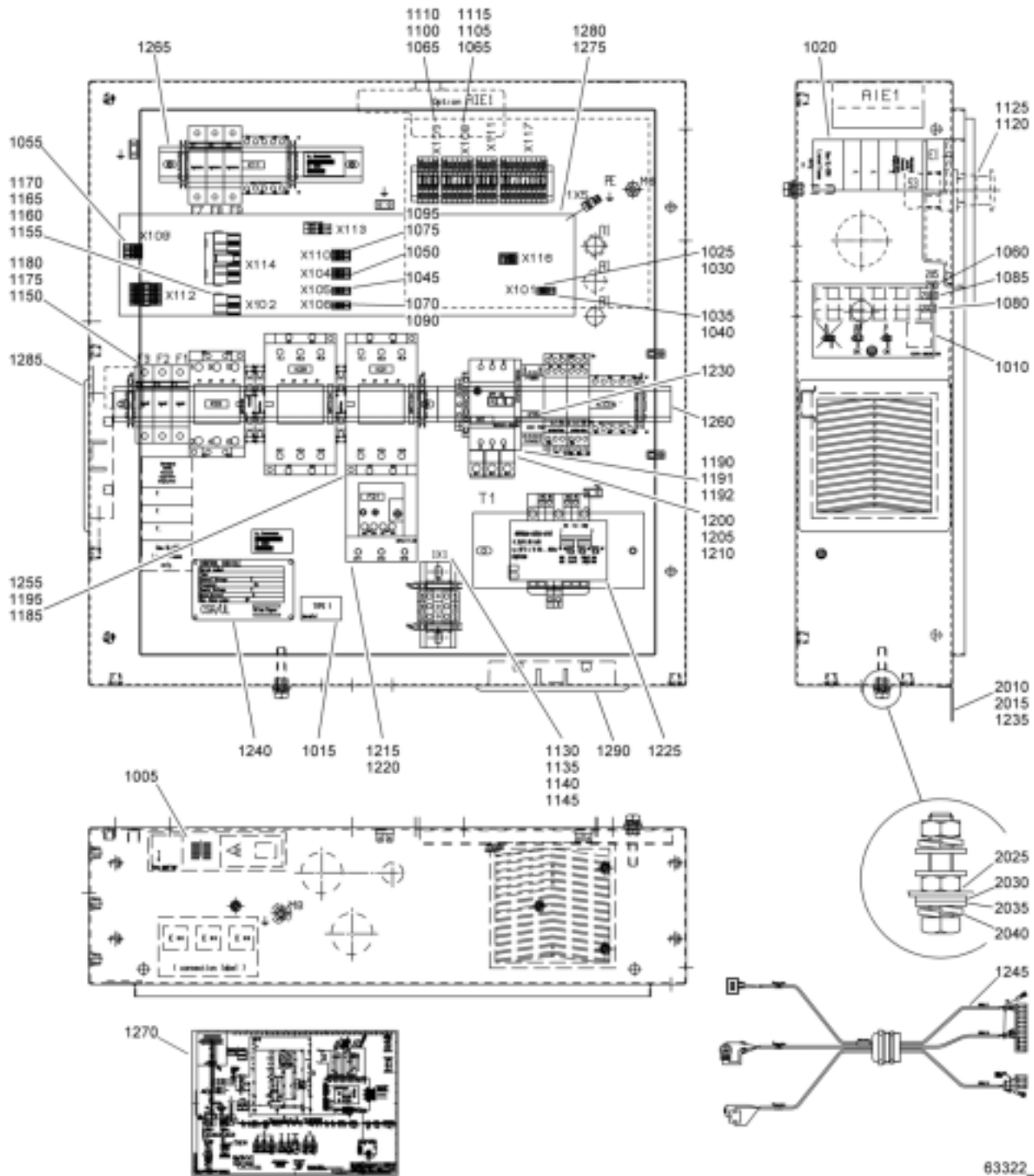
Start cubicle - Star / Delta - IEC



63321_12

| Ref. | Partnumber | Qty | Name | Remarks | Ref. | Partnumber | Qty | Name | Remarks |
|-------|---------------------|------|----------------------------|---------|------|---------------------|-------|----------------------------|---------|
| 1 220 | | • 1 | Trafo | | | | | | |
| | 1089 9436 43 | | GA 11+ 220-230V/50-60Hz | | | 1622 0548 85 | | GA 18+ 200V/60Hz | |
| | 1089 9436 44 | | GA 11+ 220V/50-60Hz HAV | | | 1622 0122 85 | | GA 18+ 220-230V/50-60Hz | |
| | 1089 9436 42 | | GA 11+ 380V/50-60Hz | | | 1622 0122 85 | | GA 18+ 380V/50-60Hz | |
| | 1089 9436 37 | | GA11 +400V/50Hz | | | 1622 0122 85 | | GA 18+ 400V/50Hz | |
| | 1089 9436 42 | | GA 11+ 440-460V/60Hz 3ph | | | 1622 0122 85 | | GA 18+ 400-460V/60Hz 3ph | |
| | 1089 9436 42 | | GA 11+ 500V/50Hz | | | 1622 0122 85 | | GA 18+ 500V/50Hz | |
| | 1089 9436 44 | | GA 15+ 200V/50-60Hz HAV | | | 1622 0548 85 | | GA 22+ 200V/50-60Hz HAV | |
| | 1089 9436 43 | | GA 15+ 220-230V/60Hz | | | 1622 0122 85 | | GA 22+ 220-230V/60Hz | |
| | 1089 9436 43 | | GA 15+ 230V/50Hz | | | 1622 0548 85 | | GA 22+ 230V/50Hz HAV | |
| | 1089 9436 42 | | GA 15+ 380V/50-60Hz | | | 1622 0122 85 | | GA 22+ 380V/50-60Hz | |
| | 1089 9436 37 | | GA 15+ 400V/50Hz | | | 1622 0122 85 | | GA 22+ 400V/50Hz | |
| | 1089 9436 42 | | GA 15+ 400-460V/60Hz 3ph | | | 1622 0122 85 | | GA 22+ 440-460V/60Hz 3ph | |
| | 1089 9436 42 | | GA 15+ 500V/50Hz | | | 1622 0122 85 | | GA 22+ 500V/50Hz | |
| | 1089 9436 44 | | GA 18+ 200V/50Hz HAV | | | 1622 0361 85 | | GA 30 220-230V/50-60Hz HAV | |
| | 1089 9436 44 | | GA 18+ 200V/60Hz | | | 1622 0548 85 | | GA 30C 380V/50Hz HAV | |
| | 1089 9436 44 | | GA 18+ 220-230V/50-60Hz | | | 1622 0361 85 | | GA 30 400V/50Hz HAV | |
| | 1089 9436 43 | | GA 18+ 380V/50-60Hz | | | 1622 0548 85 | | GA 30 440-460V/60Hz HAV | |
| | 1089 9436 37 | | GA 18+ 400V/50Hz | | | 1622 0361 85 | | GA 30 500V/50Hz HAV | |
| | 1089 9436 42 | | GA 18+ 400-460V/60Hz 3ph | | 2010 | | •• 1 | Cubicle | |
| | 1089 9436 42 | | GA 18+ 500V/50Hz | | | 1622 0361 05 | | GA 11+ 220-230V/50-60Hz | |
| | 1089 9436 44 | | GA 22+ 200V/50-60Hz HAV | | | 1622 0548 05 | | GA 11+ 220V/50-60Hz HAV | |
| | 1089 9436 44 | | GA 22+ 220-230V/60Hz | | | 1622 0361 05 | | GA 11+ 380V/50-60Hz | |
| | 1089 9436 44 | | GA 22+ 230V/50Hz HAV | | | 1622 0361 05 | | GA 11+ 400V/50Hz | |
| | 1089 9436 43 | | GA 22+ 380V/50-60Hz | | | 1622 0361 05 | | GA 11+ 440-460V/60Hz 3ph | |
| | 1089 9436 38 | | GA 22+ 400V/50Hz | | | 1622 0361 05 | | GA 11+ 500V/50Hz | |
| | 1089 9436 43 | | GA 22+ 440-460V/60Hz 3ph | | | 1622 0548 05 | | GA 15+ 200V/50-60Hz HAV | |
| | 1089 9436 42 | | GA 22+ 500V/50Hz | | | 1622 0361 05 | | GA 15+ 220-230V/60Hz | |
| | 1089 9436 44 | | GA 30 220-230V/50-60Hz HAV | | | 1622 0361 05 | | GA 15+ 230V/50Hz | |
| | 1089 9436 44 | | GA 30 380V/50Hz HAV | | | 1622 0361 05 | | GA 15+ 380V/50-60Hz | |
| | 1089 9436 38 | | GA 30 400V/50Hz HAV | | | 1622 0361 05 | | GA 15+ 400V/50Hz | |
| | 1089 9436 44 | | GA 30 440-460V/60Hz HAV | | | 1622 0361 05 | | GA 15+ 400-460V/60Hz 3ph | |
| | 1089 9436 43 | | GA 30 500V/50Hz HAV | | | 1622 0548 05 | | GA 15+ 500V/50Hz | |
| 1 225 | 1089 9461 07 | • 1 | Phase seq relay | | | 1622 0548 05 | | GA 18+ 200V/60Hz | |
| 1 230 | 1613 6639 00 | • 1 | Data plate | | | 1622 0361 05 | | GA 18+ 220-230V/50-60Hz | |
| 1 235 | 1622 0005 43 | • 1 | Wiring | | | 1622 0361 05 | | GA 18+ 380V/50-60Hz | |
| 1 245 | 9139 5000 16 | • AR | Rail | | | 1622 0361 05 | | GA 18+ 400V/50Hz | |
| 1 250 | 9820 3554 06 | • 1 | Service diagram | | | 1622 0361 05 | | GA 18+ 400-460V/60Hz 3ph | |
| 1 255 | 9139 5000 16 | • AR | Rail | | | 1622 0361 05 | | GA 18+ 500V/50Hz | |
| 1 260 | 1089 9556 15 | • 1 | Air inlet left | | | 1622 0548 05 | | GA 22+ 200V/50-60Hz HAV | |
| 1 265 | 1089 9556 05 | • 1 | Air inlet right | | | 1622 0361 05 | | GA 22+ 220-230V/60Hz | |
| | | • 1 | Assembly drawing | | | 1622 0548 05 | | GA 22+ 230V/50Hz HAV | |
| | 1622 0122 85 | | GA 11+ 220-230V/50-60Hz | | | 1622 0361 05 | | GA 22+ 380V/50-60Hz | |
| | 1622 0548 85 | | GA 11+ 220V/50-60Hz HAV | | | 1622 0361 05 | | GA 22+ 400V/50Hz | |
| | 1622 0122 85 | | GA 11+ 380V/50-60Hz | | | 1622 0361 05 | | GA 22+ 440-460V/60Hz 3ph | |
| | 1622 0122 85 | | GA 11+ 400V/50Hz | | | 1622 0361 05 | | GA 22+ 500V/50Hz | |
| | 1622 0122 85 | | GA 11+ 440-460V/60Hz 3ph | | | 1622 0361 05 | | GA 30 220-230V/50-60Hz HAV | |
| | 1622 0122 85 | | GA 11+ 500V/50Hz | | | 1622 0548 05 | | GA 30 380V/50Hz HAV | |
| | 1622 0548 85 | | GA 15+ 200V/50-60Hz HAV | | | 1622 0361 05 | | GA 30 400V/50Hz HAV | |
| | 1622 0122 85 | | GA 15+ 220-230V/60Hz | | | 1622 0548 05 | | GA 30 440-460V/60Hz HAV | |
| | 1622 0122 85 | | GA 15+ 230V/50Hz | | | 1622 0361 05 | | GA 30 500V/50Hz HAV | |
| | 1622 0122 85 | | GA 15+ 380V/50-60Hz | | 2015 | 1202 6584 00 | •• AR | Seal | |
| | 1622 0122 85 | | GA 15+ 400V/50Hz | | 2025 | 0268 7110 00 | •• 2 | Nut | |
| | 1622 0122 85 | | GA 15+ 400-460V/60Hz 3ph | | 2030 | 0300 0275 05 | •• 2 | Washer | |
| | 1622 0122 85 | | GA 15+ 500V/50Hz | | 2035 | 0301 2335 00 | •• 2 | Washer | |
| | 1622 0548 85 | | GA 18+ 200V/50Hz HAV | | 2040 | 0333 2174 37 | •• 2 | Spring washer | |

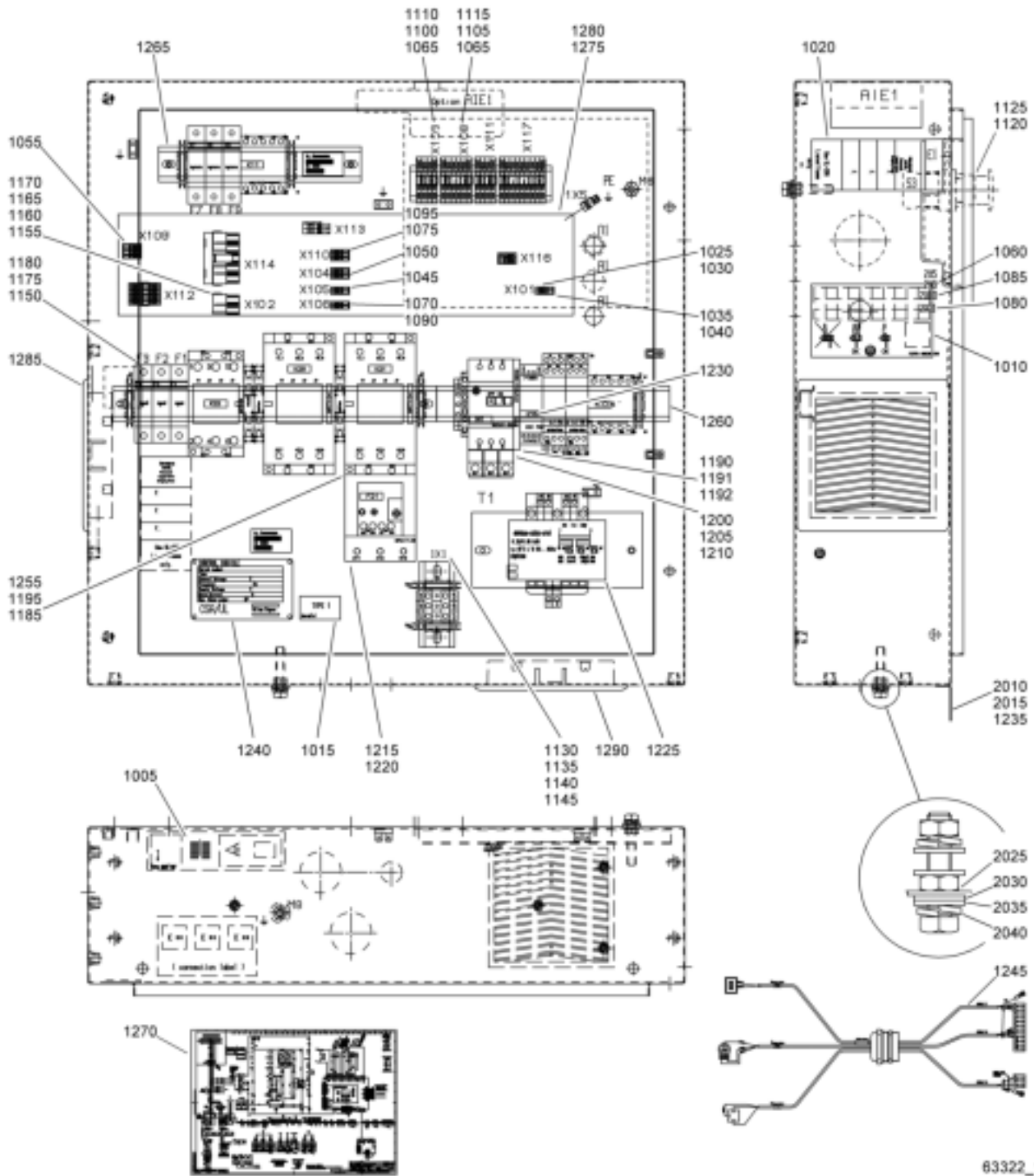
13



Start cubicle - DOL - CSA/UL

| Ref. | Partnumber | Qty | Name | Remarks | Ref. | Partnumber | Qty | Name | Remarks |
|------|---------------------|----------|-------------------------|---------|-------|--------------|-----|-------------------------|---------|
| | | 1 | Electr. panel | | | | | | |
| | 1900 2053 56 | | GA 11+200-230V/60Hz | | | 1089 9362 04 | | GA 15+200V/60Hz | |
| | 1900 2053 50 | | GA 11+400-460V/60Hz | | | 1089 9362 04 | | GA 15+200-230V/60Hz | |
| | 1900 2053 53 | | GA 11+575V/60Hz | | | 1089 9416 93 | | GA 15+400-460V/60Hz | |
| | 1900 2053 57 | | GA 15+200V/60Hz | | | 1089 9416 93 | | GA 15+575V/60Hz | |
| | 1900 2053 52 | | GA 15+200-230V/60Hz | | | 1089 9416 93 | | GA 18+400-460V/60Hz | |
| | 1900 2053 50 | | GA 15+400-460V/60Hz | | | 1089 9416 93 | | GA 18+575V/60Hz | |
| | 1900 2053 53 | | GA 15+575V/60Hz | | | 1089 9416 93 | | GA 22+400-460V/60Hz | |
| | 1900 2053 51 | | GA 18+400-460V/60Hz | | | 1089 9362 04 | | GA 22+575V/60Hz | |
| | 1900 2053 54 | | GA 18+575V/60Hz | | 1 190 | 1089 9511 15 | • 1 | GA 30 400-575V/60Hz HAV | |
| | 1900 2053 51 | | GA 22+400-460V/60Hz | | 1 191 | 1089 9511 16 | • 1 | Interface relay | |
| | 1900 2053 54 | | GA 22+575V/60Hz | | 1 192 | 1089 9511 15 | • 1 | Interface relay | |
| | 1900 2053 55 | | GA 30 400-575V/60Hz HAV | | 1 195 | | • 1 | Interface relay | |
| | | | | | | | | Contactor | |
| 1005 | 1079 9901 68 | • 1 | Warning label | | | 1089 9415 44 | | GA 11+200-230V/60Hz | |
| 1010 | 1079 9906 09 | • 1 | Label | | | 1089 9415 35 | | GA 11+400-460V/60Hz | |
| 1015 | 1079 9911 01 | • 1 | Label | | | 1089 9415 34 | | GA 11+575V/60Hz | |
| 1020 | 1079 9924 27 | • 1 | Label | | | 1089 9415 46 | | GA 15+200V/60Hz | |
| 1025 | 1088 0015 02 | • 1 | Connector plug | | | 1089 9415 45 | | GA 15+200-230V/60Hz | |
| 1030 | 1088 0015 16 | • 2 | Connector pin | | | 1089 9415 35 | | GA 15+400-460V/60Hz | |
| 1035 | 1088 0015 22 | • 1 | Connector plug | | | 1089 9415 34 | | GA 15+575V/60Hz | |
| 1040 | 1088 0015 36 | • 2 | Connector socket | | | 1089 9415 36 | | GA 18+400-460V/60Hz | |
| 1045 | 1088 0031 02 | • 2 | Connector | | | 1089 9415 35 | | GA 18+575V/60Hz | |
| 1050 | 1088 0031 03 | • 1 | Connector | | | 1089 9415 36 | | GA 22+400-460V/60Hz | |
| 1055 | 1088 0031 04 | • 1 | Connector | | | 1089 9415 35 | | GA 22+575V/60Hz | |
| 1060 | 1088 0031 13 | • 1 | Connector | | | 1089 9415 45 | | GA 30 400-575V/60Hz HAV | |
| 1065 | 1088 0031 18 | • 4 | Adaptor | | 1 200 | 1089 9416 01 | • 1 | Aux.contact block | |
| 1070 | 1088 0031 22 | • 2 | Connector | | 1 205 | | • 1 | Circuit breaker | |
| 1075 | 1088 0031 23 | • 1 | Connector | | | 1089 9416 64 | | GA 11+200-230V/60Hz | |
| 1080 | 1088 0031 29 | • 1 | Connector | | | 1089 9416 61 | | GA 11+400-460V/60Hz | |
| 1085 | 1088 0031 49 | • 1 | Connector | | | 1089 9416 61 | | GA 11+575V/60Hz | |
| 1090 | 1088 0031 82 | • 2 | Connector | | | 1089 9416 64 | | GA 15+200V/60Hz | |
| 1095 | 1088 0031 83 | • 1 | Connector | | | 1089 9416 64 | | GA 15+200-230V/60Hz | |
| 1100 | 1088 0031 84 | • 1 | Connector | | | 1089 9416 61 | | GA 15+400-460V/60Hz | |
| 1105 | 1088 0031 86 | • 1 | Connector | | | 1089 9416 61 | | GA 15+575V/60Hz | |
| 1110 | 1088 0037 04 | • 1 | Connector | | | 1089 9416 61 | | GA 18+400-460V/60Hz | |
| 1115 | 1088 0037 06 | • 1 | Connector | | | 1089 9416 61 | | GA 18+575V/60Hz | |
| 1120 | 1089 0362 50 | • 2 | Contact block | | | 1089 9416 61 | | GA 22+400-460V/60Hz | |
| 1125 | 1089 0362 51 | • 1 | Push button | | | 1089 9416 61 | | GA 22+575V/60Hz | |
| 1130 | | • 2 | Terminal | | | 1089 9416 62 | | GA 30 400-575V/60Hz HAV | |
| | 1089 0506 07 | | GA 11+200-230V/60Hz | | 1 210 | 1089 9416 75 | • 1 | Connection block | |
| | 1089 0506 09 | | GA 11+400-460V/60Hz | | 1 215 | | • 1 | Overload relay | |
| | 1089 0506 07 | | GA 15+200V/60Hz | | | 1089 9424 46 | | GA 11+200-230V/60Hz | |
| | 1089 0506 07 | | GA 15+200-230V/60Hz | | | 1089 9424 38 | | GA 11+400-460V/60Hz | |
| | 1089 0506 09 | | GA 15+400-460V/60Hz | | | 1089 9424 37 | | GA 11+575V/60Hz | |
| | 1089 0506 09 | | GA 18+400-460V/60Hz | | | 1089 9424 47 | | GA 15+200V/60Hz | |
| | 1089 0506 09 | | GA 22+400-460V/60Hz | | | 1089 9424 47 | | GA 15+200-230V/60Hz | |
| | 1089 0506 07 | | GA 30 400-575V/60Hz HAV | | | 1089 9424 38 | | GA 15+400-460V/60Hz | |
| 1135 | 1089 0506 27 | • 1 | Terminal | | | 1089 9424 37 | | GA 15+575V/60Hz | |
| 1140 | 1089 0506 30 | • 5 | End bracket | | | 1089 9424 41 | | GA 18+400-460V/60Hz | |
| 1145 | 1089 0506 75 | • 1 | Terminal | | | 1089 9424 39 | | GA 18+575V/60Hz | |
| 1150 | 1089 0612 01 | • 3 | Fuse holder | | | 1089 9424 41 | | GA 22+400-460V/60Hz | |
| 1155 | 1089 0700 01 | • 1 | Connector | | | 1089 9424 39 | | GA 22+575V/60Hz | |
| 1160 | 1089 0700 02 | • 1 | Connector | | | 1089 9424 46 | | GA 30 400-575V/60Hz HAV | |
| 1165 | 1089 0700 03 | • 4 | Connector pin | | 1 220 | 1089 9424 99 | • 1 | Connector/adaptor | |
| 1170 | 1089 0700 04 | • 8 | Connector socket | | 1 225 | | • 1 | Trafo | |
| 1175 | 1089 9168 24 | • 2 | Fuse link | | | 1089 9436 43 | | GA 11 200-230V/60Hz | |
| 1180 | 1089 9168 36 | • 1 | Fuse link | | | 1089 9436 42 | | GA 11+400-460V/60Hz | |
| 1185 | | • 1 | Cover | | | 1089 9436 42 | | GA 11+575V/60Hz | |
| | 1089 9362 04 | | GA 11+200-230V/60Hz | | | 1089 9436 43 | | GA 15+200-230V/60Hz | |
| | 1089 9416 93 | | GA 11+400-460V/60Hz | | | 1089 9436 42 | | GA 15+400-460V/60Hz | |
| | 1089 9416 93 | | GA 11+575V/60Hz | | | 1089 9436 42 | | GA 15+575V/60Hz | |

13

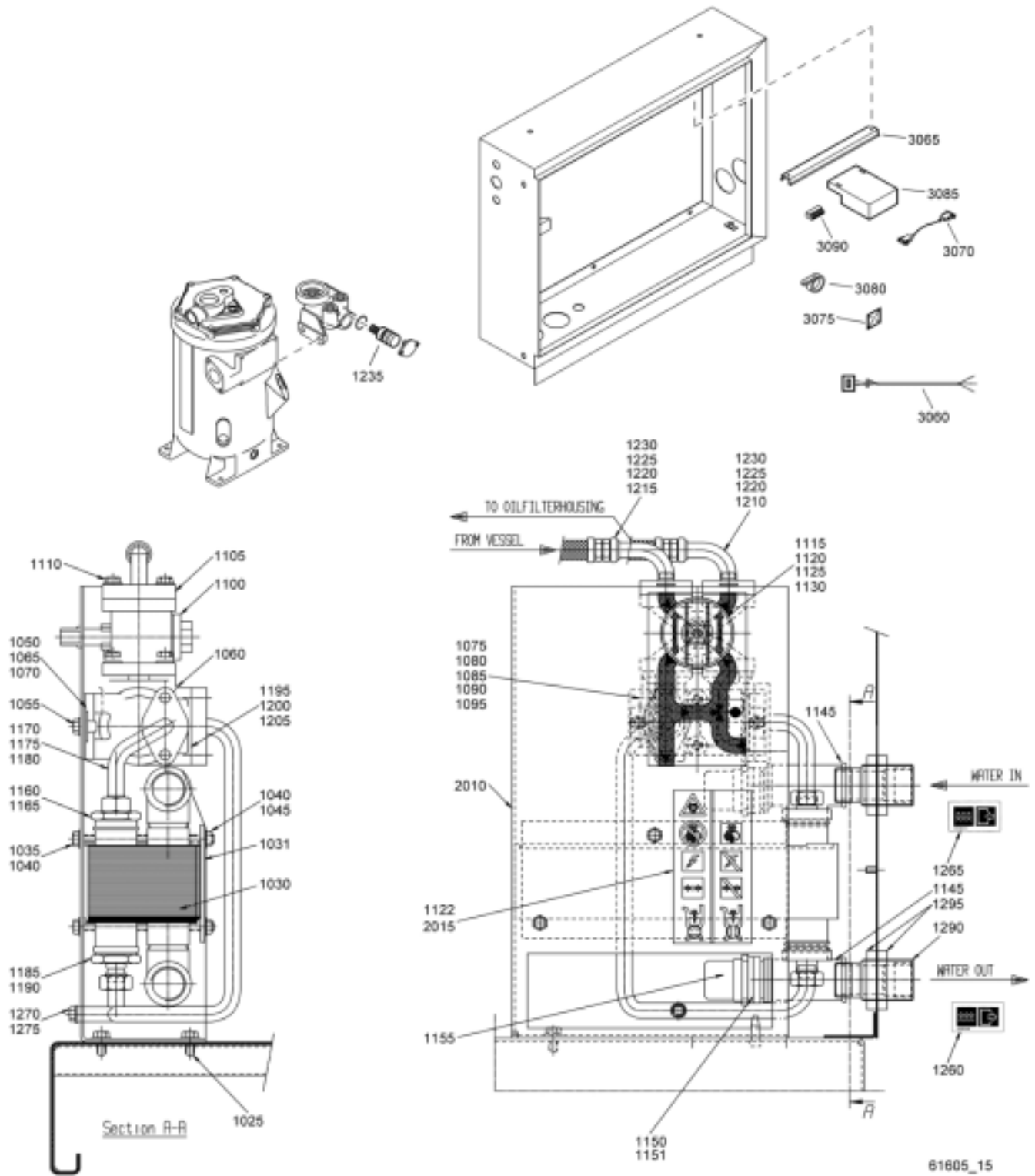


63322_12

Start cubicle - DOL - CSA/UL

| Ref. | Partnumber | Qty | Name | Remarks |
|-------|---------------------|-------|--------------------------|---------|
| | 1089 9436 42 | | GA 18+ 400-460V/60Hz | |
| | 1089 9436 42 | | GA 18+ 575V/60Hz | |
| | 1089 9436 42 | | GA 22+ 400-460V/60Hz | |
| | 1089 9436 42 | | GA 22+ 575V/60Hz | |
| | 1089 9436 43 | | GA 30 400-575V/60Hz HAV | |
| 1 230 | | • 1 | Phase seq relay | |
| | 1089 9591 01 | | GA 11+ 200-230V/60Hz | |
| | 1089 9461 03 | | GA 11+ 400-460V/60Hz | |
| | 1089 9461 04 | | GA 11+ 575V/60Hz | |
| | 1089 9591 01 | | GA 15+ 200V/60Hz | |
| | 1089 9591 01 | | GA 15+ 200-230V/60Hz | |
| | 1089 9461 03 | | GA 15+ 400-460V/60Hz | |
| | 1089 9461 04 | | GA 15+ 575V/60Hz | |
| | 1089 9461 03 | | GA 18+ 400-460V/60Hz | |
| | 1089 9461 04 | | GA 18+ 575V/60Hz | |
| | 1089 9461 03 | | GA 22+ 400-460V/60Hz | |
| | 1089 9461 04 | | GA 22+ 575V/60Hz | |
| | 1089 9461 04 | | GA 30 400-575V/60Hz HAV | |
| 1 235 | 1613 3431 00 | • 1 | Label | |
| 1 240 | 1614 8949 00 | • 1 | Data plate | |
| 1 245 | 1622 0005 43 | • 1 | Wiring | |
| 1 255 | 2901 1608 00 | • 3 | Connection element | |
| 1 260 | 9139 5000 16 | • AR | Rail | |
| 1 265 | 9139 5000 16 | • AR | Rail | |
| 1 270 | 9820 3554 09 | • 1 | Service diagram | |
| 1 275 | 1089 0577 36 | • 3 | Terminal | |
| 1 280 | 1089 0577 37 | • 1 | Terminal cover | |
| 1 285 | 1089 9556 15 | • 1 | Air inlet left | |
| 1 290 | 1089 9556 05 | • 1 | Air inlet right | |
| | | • 1 | Assembly drawing | |
| | 1622 0122 85 | | GA 11+ 200-230V/60Hz | |
| | 1622 0122 85 | | GA 11+ 400-460V/60Hz | |
| | 1622 0122 85 | | GA 11+ 575V/60Hz | |
| | 1622 0122 85 | | GA 15+ 200V/60Hz | |
| | 1622 0122 85 | | GA 15+ 200-230V/60Hz | |
| | 1622 0122 85 | | GA 15+ 400-460V/60Hz | |
| | 1622 0122 85 | | GA 15+ 575V/60Hz | |
| | 1622 0122 85 | | GA 18+ 400-460V/60Hz | |
| | 1622 0122 85 | | GA 18+ 575V/60Hz | |
| | 1622 0122 85 | | GA 22+ 400-460V/60Hz | |
| | 1622 0122 85 | | GA 22+ 575V/60Hz | |
| | 1622 0548 85 | | GA 30 400-575V/60Hz HAV | |
| 2010 | | •• 1 | Cubicle | |
| | 1622 0361 05 | | GA 11+ 200-230V/60Hz | |
| | 1622 0361 05 | | GA 11+ 400-460V/60Hz | |
| | 1622 0361 05 | | GA 11+ 575V/60Hz | |
| | 1622 0361 05 | | GA 15+ 200V/60Hz | |
| | 1622 0361 05 | | GA 15+ 200-230V/60Hz | |
| | 1622 0361 05 | | GA 15+ 400-460V/60Hz | |
| | 1622 0361 05 | | GA 15+ 575V/60Hz | |
| | 1622 0361 05 | | GA 18+ 400-460V/60Hz | |
| | 1622 0361 05 | | GA 18+ 575V/60Hz | |
| | 1622 0361 05 | | GA 22+ 400-460V/60Hz | |
| | 1622 0361 05 | | GA 22+ 575V/60Hz | |
| | 1622 0548 05 | | GA 30C 400-575V/60Hz HAV | |
| 2015 | 1202 6584 00 | •• AR | Seal | |
| 2025 | 0268 7110 00 | •• 2 | Nut | |
| 2030 | 0300 0275 05 | •• 2 | Washer | |
| 2035 | 0301 2335 00 | •• 2 | Washer | |
| 2040 | 0333 2174 37 | •• 2 | Spring washer | |

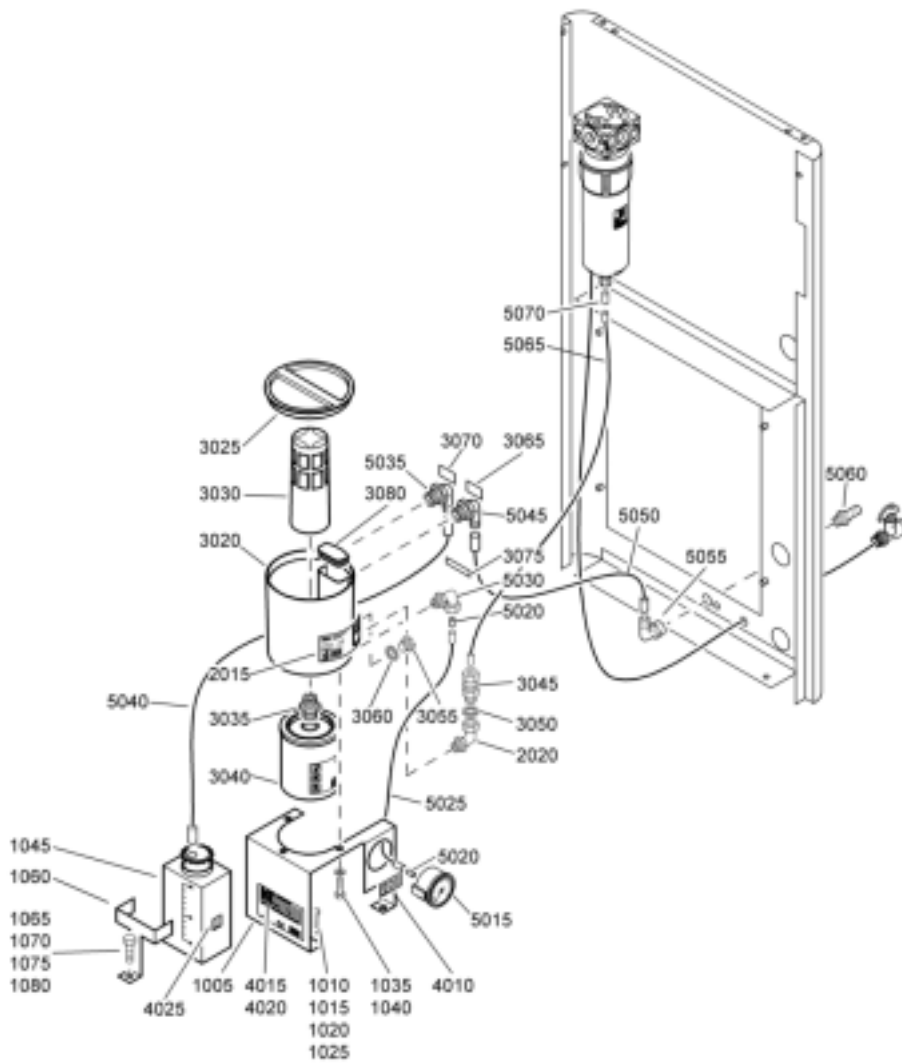
14



Energy recovery system

| Ref. | Partnumber | Qty | Name | Remarks | Ref. | Partnumber | Qty | Name | Remarks |
|------|--------------|-----|----------------|---------|------|---------------------|----------|----------------------|---------|
| 1025 | 0226 0301 00 | 2 | Tapping screw | | 1160 | 0571 0035 11 | 1 | Hose connection | |
| 1030 | 1613 7805 00 | 1 | Heat exchanger | | 1165 | 0661 1000 44 | 1 | Seal washer | |
| 1031 | 1613 7799 00 | 1 | Plate | | 1170 | 1622 0089 00 | 1 | Pipe | |
| 1035 | 0147 1344 03 | 3 | Hexagon bolt | | 1175 | 0663 3129 00 | 1 | O-ring | |
| 1040 | 0301 2335 00 | 6 | Washer | | 1180 | 0147 1325 03 | 2 | Hexagon bolt | |
| 1045 | 0266 2110 00 | 3 | Nut | | 1185 | 0571 0035 11 | 1 | Hose connection | |
| 1050 | 1613 7061 00 | 1 | Bracket | | 1190 | 0661 1000 44 | 1 | Seal washer | |
| 1055 | 1619 2766 00 | 2 | Bolt | | 1195 | 1622 0090 01 | 1 | Pipe | |
| 1060 | 1202 7521 00 | 1 | Therm.housing | | 1200 | 0663 3129 00 | 1 | O-ring | |
| 1065 | 0147 1321 03 | 2 | Hexagon bolt | | 1205 | 0147 1325 03 | 2 | Hexagon bolt | |
| 1070 | 0301 2335 00 | 2 | Washer | | 1210 | 1622 0093 00 | 1 | Hose assembly | |
| 1075 | 1614 6118 00 | 1 | Flange | | 1215 | 1622 0092 00 | 1 | Hose assembly | |
| 1080 | 0663 2101 95 | 1 | O-ring | | 1220 | 0663 3129 00 | 2 | O-ring | |
| 1085 | 0147 1246 03 | 2 | Hexagon bolt | | 1225 | 0147 1327 03 | 4 | Hexagon bolt | |
| 1090 | 0301 2321 00 | 2 | Washer | | 1230 | 0266 2110 00 | 4 | Nut | |
| 1095 | | 1 | Thermostat | | 1235 | | 1 | Thermostat | |
| | 1622 7064 01 | | 7.5 bar(e) | | | 1622 7064 04 | | 60°C | |
| | 1622 7064 01 | | 8.5 bar(e) | | | 1619 7493 00 | | 75°C | |
| | 1622 7064 01 | | 10 bar(e) | | 1260 | 1079 9913 69 | 1 | Inform.label | |
| | 1622 7064 04 | | 13 bar(e) | | 1265 | 1079 9913 79 | 1 | Inform.label | |
| | 1622 7064 01 | | 100 psig | | 1270 | 0686 4201 00 | 1 | Hexagon plug | |
| | 1622 7064 01 | | 125 psig | | 1275 | 0653 1046 00 | 1 | Flat gasket | |
| | 1622 7064 01 | | 150 psig | | 1290 | 1622 0094 00 | 2 | Pipe | |
| | 1622 7064 04 | | 175 psig | | 1295 | 0295 3109 00 | 4 | Nut | |
| 1100 | 1202 7522 00 | 1 | 4-way valve | | | 1622 0088 81 | 1 | Support ass'y | |
| 1105 | 0663 2102 64 | 2 | O-ring | | 2010 | | • 1 | Support | |
| 1110 | 0147 1325 03 | 4 | Hexagon bolt | | 2015 | 1079 9902 89 | • 1 | Warning label | |
| 1115 | 1202 7689 00 | 1 | Handle | | 2020 | 1202 7682 00 | • 1 | Label | |
| 1120 | 1202 7683 00 | 2 | Label | | 3060 | 1622 0663 03 | 2 | Cable | |
| 1122 | 1079 9902 89 | 1 | Warning label | | 3065 | 1622 0665 05 | 1 | DIN-rail | |
| 1125 | 0147 1321 03 | 1 | Hexagon bolt | | 3070 | 1622 0661 01 | 1 | Cable | |
| 1130 | 0301 2335 00 | 1 | Washer | | 3075 | 1088 1305 01 | 3 | Push mount | |
| 1145 | 0564 0000 64 | 2 | Tee | | 3080 | 1088 1301 01 | 4 | Cable strip | |
| 1150 | 0605 8700 51 | 2 | Bushing | | 3085 | 1900 0710 41 | 1 | AIE 1 elektronikon | |
| 1151 | 0661 1000 44 | 2 | Seal washer | | 3090 | 1088 0031 04 | 1 | Connector | |
| 1155 | 1089 0574 49 | 2 | Temp.sensor | | | | | | |

15



61806_06

Drain system - Oil Separator condensate Drain

15

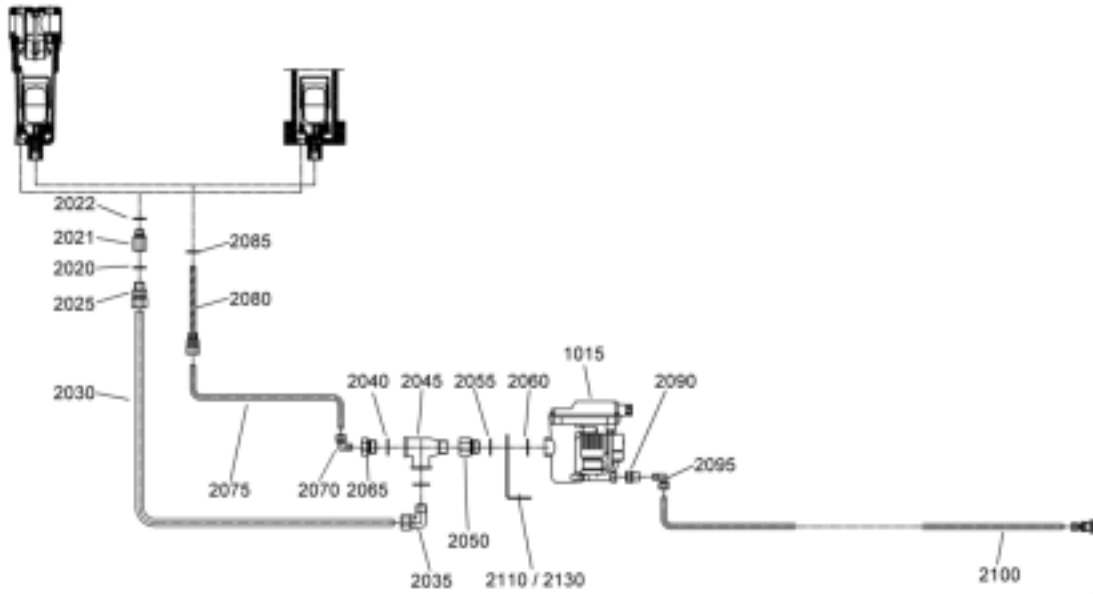
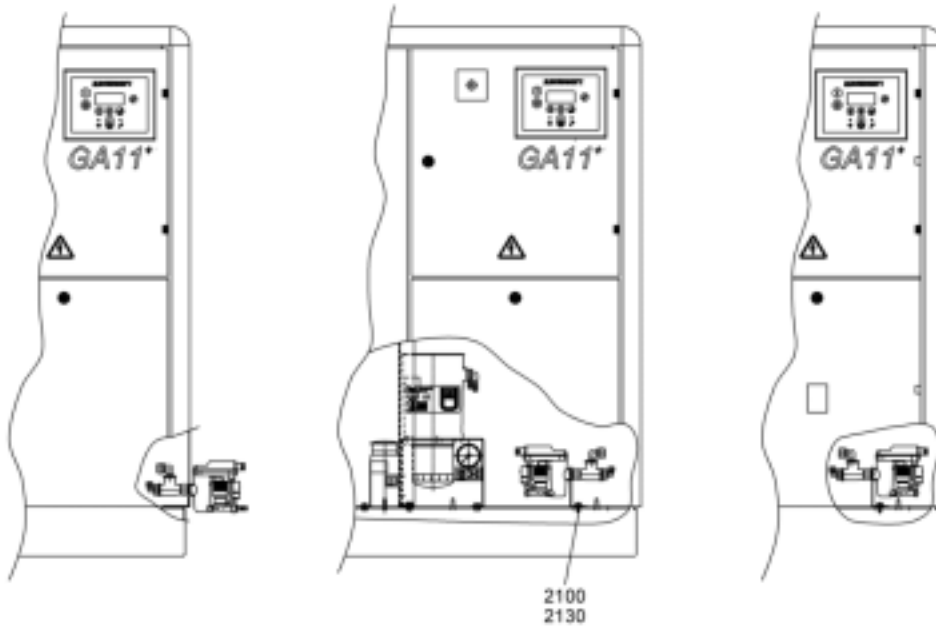
| Ref. | Partnumber | Qty | Name | Remarks | Ref. | Partnumber | Qty | Name | Remarks |
|------|---------------------|-------------|---------------------------------------|---------|------|--------------|-------|----------------|---------|
| | 8092 2449 64 | 1 | Oil Separator condensate Drain | | 3045 | 1613 7378 00 | ••• 1 | Strainer | |
| 1005 | 1622 0087 00 | • 1 | Support | | 3050 | 0653 0500 47 | ••• 1 | Gasket | |
| 1010 | 0301 2335 00 | • 1 | Washer | | 3055 | 0686 3716 02 | ••• 1 | Hexagon plug | |
| 1015 | 0333 3227 00 | • 1 | Lock washer | | 3060 | 0653 9098 00 | ••• 1 | Flat gasket | |
| 1020 | 0266 2110 00 | • 1 | Nut | | 3065 | 1079 9913 69 | ••• 1 | Inform.label | |
| 1025 | 0147 1323 03 | • 1 | Hexagon bolt | | 3070 | 1079 9912 28 | ••• 1 | Decal | |
| 1035 | 0147 1322 03 | • 3 | Hexagon bolt | | 3075 | 1079 9912 07 | ••• 1 | Decal | |
| 1040 | 0301 2335 00 | • 3 | Washer | | 3080 | 1613 7945 00 | ••• 1 | Plug | |
| 1045 | 1613 7657 00 | • 1 | Oil can | | 4010 | 1079 9912 11 | • 1 | Decal | |
| 1060 | 1622 0091 00 | • 1 | Support | | 4015 | 1613 7384 00 | • 1 | Data plate | |
| 1065 | 0301 2335 00 | • 1 | Washer | | 4020 | 0129 3104 00 | • 4 | Blind rivet | |
| 1070 | 0333 3227 00 | • 1 | Lock washer | | 4025 | 1079 9912 38 | • 1 | Decal | |
| 1075 | 0266 2110 00 | • 1 | Nut | | 5015 | 1615 7264 00 | • 1 | Pressure gauge | |
| 1080 | 0147 1323 03 | • 1 | Hexagon bolt | | 5020 | 0584 9904 00 | • 2 | Sleeve | |
| 2015 | 1613 7603 82 | • 1 | OSD assembly | | 5025 | 0070 6002 04 | • AR | Plastic tube | |
| 2020 | 1079 9909 06 | •• 1 | Label | | 5030 | 0581 2024 38 | • 1 | Elbow coupling | |
| | 0560 4400 83 | •• 1 | Pipe fitting | | 5035 | 1613 7985 80 | • 1 | Elbow coupling | |
| | 1613 7603 80 | •• 1 | OSD sub assembly | | 5040 | 0070 6002 14 | • AR | Plastic tube | |
| 3020 | 1613 7603 00 | ••• 1 | Housing | | 5045 | 1613 7985 80 | • 1 | Elbow coupling | |
| 3025 | 1613 7604 00 | ••• 1 | Plug | | 5050 | 0070 6002 14 | • AR | Plastic tube | |
| 3030 | 1613 7299 00 | ••• 1 | Filter | | 5055 | 1613 7342 00 | • 1 | Elbow coupling | |
| 3035 | 1613 7601 00 | ••• 1 | Check valve | | 5060 | 1613 7341 00 | • 1 | Pipe coupling | |
| 3040 | 1613 7602 00 | ••• 1 | Oil separator | | 5065 | 0070 6002 05 | • AR | Plastic tube | |
| | | | | | 5070 | 0584 0080 10 | • 1 | Cutting ring | |

16 Drain system - Electronic Water Drain

OSD + Transfo / Energy recovery

OSD

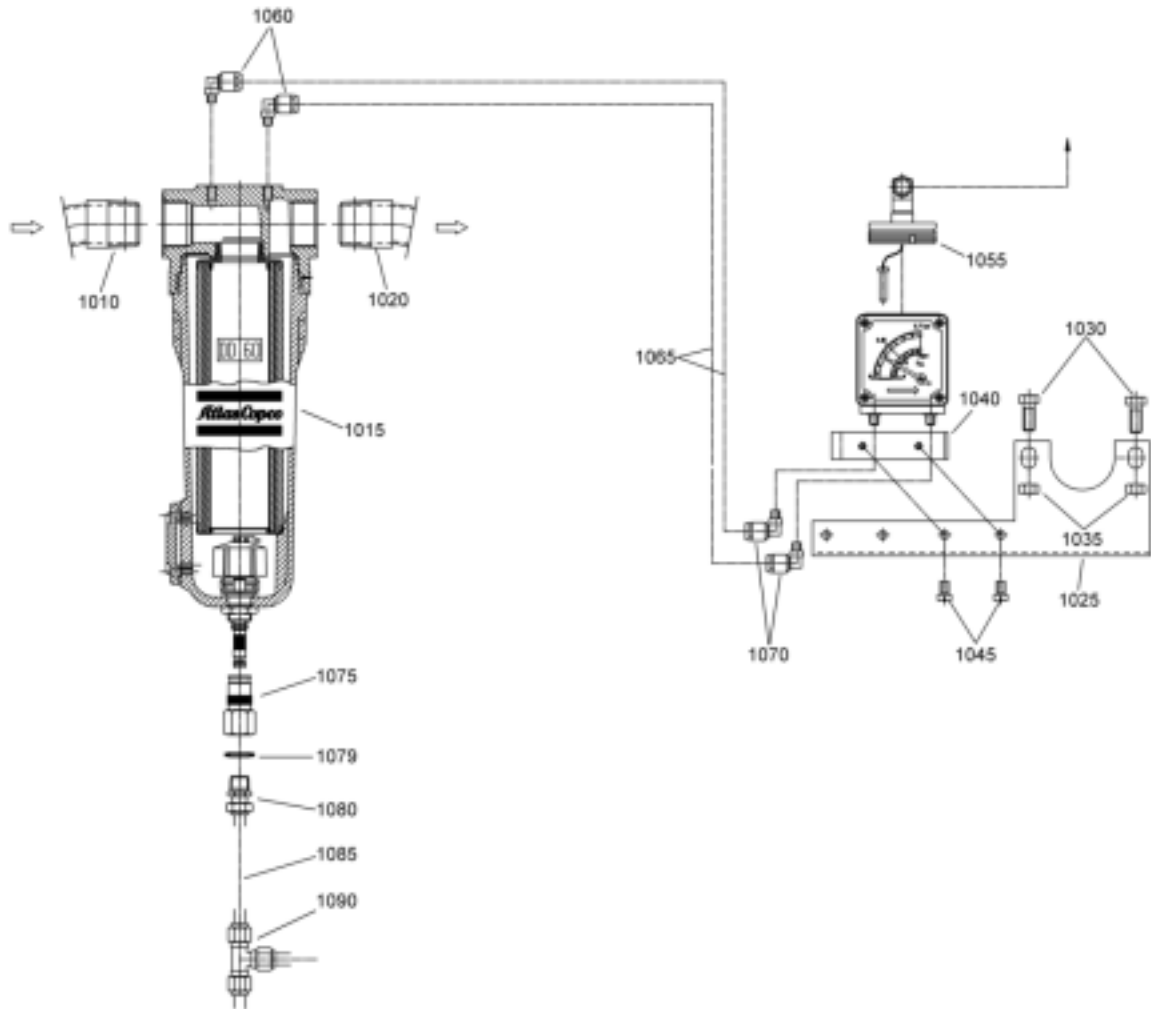
Others



63323_06

| Ref. | Partnumber | Qty | Name | Remarks | Ref. | Partnumber | Qty | Name | Remarks |
|------|---------------------|----------|-------------------------------|---------|------|--------------|------|-----------------|---------|
| | 8092 2827 09 | 1 | Electronic Water Drain | | 2055 | 0653 1124 00 | • 1 | Flat gasket | |
| | | | 110V/50-60Hz | | 2060 | 0653 1124 00 | • 1 | Flat gasket | |
| 1015 | | • 1 | EWD 75 | | 2065 | 0605 8814 06 | • 1 | Bushing | |
| | 1613 8800 04 | • 1 | 110V/50-60Hz | | 2070 | 0581 1200 23 | • 1 | Elbow coupling | |
| 2020 | 0661 1000 38 | • 1 | Seal washer | | 2075 | 0070 6002 05 | • AR | Plastic tube | |
| 2021 | 1622 0359 00 | • 1 | Straight pipe coupling | | 2080 | 1613 8084 00 | • 1 | Pipe coupling | |
| 2022 | 0653 1062 00 | • 1 | Flat gasket | | 2085 | 0661 1000 38 | • 1 | Seal washer | |
| 2025 | 0581 0000 45 | • 1 | Pipe coupling | | 2090 | 0607 1151 06 | • 1 | Reducing socket | |
| 2030 | 0070 6002 06 | • AR | Plastic tube | | 2095 | 0581 1200 26 | • 1 | Elbow coupling | |
| 2035 | 0581 1200 29 | • 1 | Elbow | | 2100 | 0070 6002 05 | • AR | Plastic tube | |
| 2040 | 0653 1124 00 | • 1 | Flat gasket | | 2110 | 1622 0097 00 | • 1 | Bracket | |
| 2045 | 1503 2566 13 | • 1 | Tee | | 2130 | 0226 0301 00 | • 2 | Tapping screw | |
| 2050 | 1613 9029 00 | • 1 | Nipple | | 2200 | 1622 0629 01 | • 1 | Wiring | |

DD filter kit

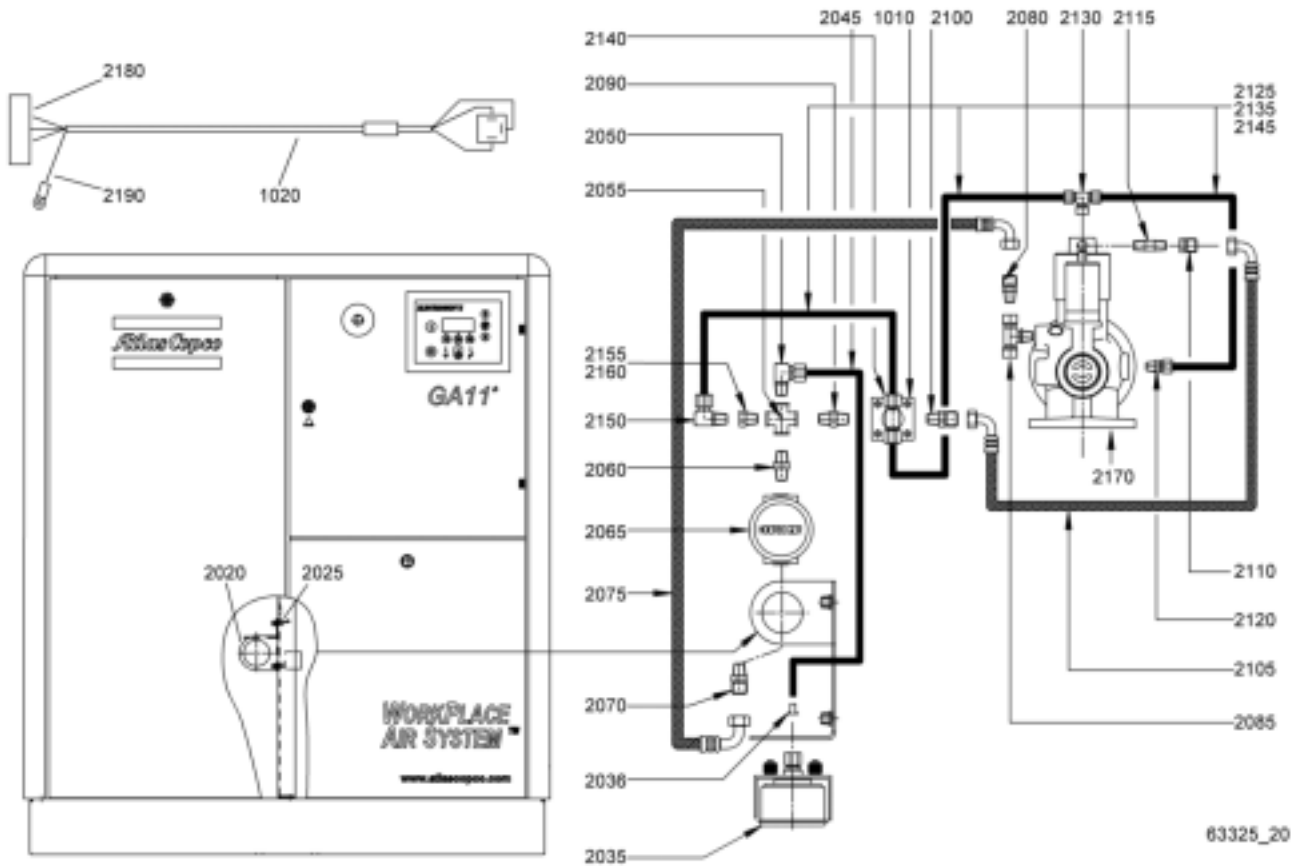


61607_03

| Ref. | Partnumber | Qty | Name | Remarks | Ref. | Partnumber | Qty | Name | Remarks |
|------|--------------|-----|---------------|---------|------|--------------|-----|------------------|---------|
| 1010 | 1622 0140 00 | 1 | Pipe | | 1060 | 0583 8120 62 | 2 | Push-in coupling | |
| 1015 | 1617 7197 00 | 1 | Filter DD 60 | | 1065 | 0070 6002 20 | AR | Plastic tube | |
| 1020 | 1622 0081 00 | 1 | Pipe | | 1070 | 0583 8120 10 | 2 | Elbow coupling | |
| 1025 | 1622 0096 00 | 1 | Bracket | | 1075 | 1617 7082 02 | 1 | Quick coupling | |
| 1030 | 0147 1323 03 | 2 | Hexagon bolt | | 1079 | 0661 1000 38 | 1 | Seal washer | |
| 1035 | 0266 2110 00 | 2 | Nut | | 1080 | 0581 0000 35 | 1 | Coupling | |
| 1040 | 1617 7098 00 | 1 | Support | | 1085 | 0070 6002 05 | AR | Plastic tube | |
| 1045 | 0160 6060 00 | 2 | Screw | | 1090 | 0581 2000 18 | 1 | Coupling | |
| 1055 | 1622 0098 80 | 2 | Wire assembly | | | | | | |
| | 1088 0031 54 | • 1 | Connector | X109 | | | | | |

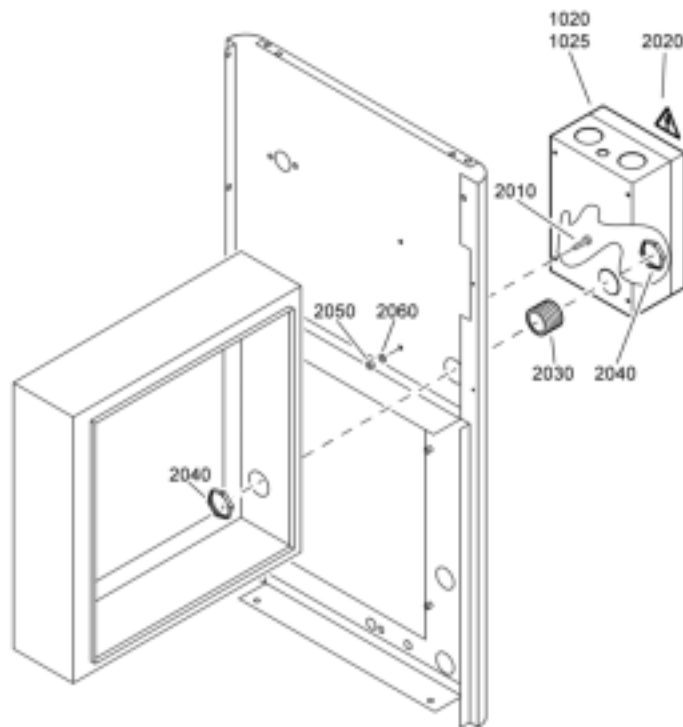
18

Modulating control



| Ref. | Partnumber | Qty | Name | Remarks | Ref. | Partnumber | Qty | Name | Remarks |
|------|--------------|-----|-----------------|---------|-------------|--------------|----------|------------------------|---------|
| 1010 | 1089 0621 09 | 1 | Solenoid valve | | 2090 | 1503 2564 01 | 1 | Nipple | |
| | 1089 0621 02 | | 110V/50Hz | | 2100 | 1079 5840 25 | 1 | Hexagon nipple | |
| | 1089 0621 02 | | 115V/60Hz | | 2105 | 0575 0401 18 | 1 | Hose assembly | |
| 1020 | 1622 1295 03 | 1 | Cable | | 2110 | 1079 5840 09 | 1 | Hexagon nipple | |
| 2020 | 1622 0095 00 | 1 | Bracket | | 2115 | 0551 0001 62 | 1 | Threaded pipe | |
| 2025 | 0147 1963 08 | 2 | Hexagon bolt | | 2120 | 0581 0000 78 | 1 | Pipe coupling | |
| 2035 | 1615 7264 00 | 1 | Pressure gauge | | 2125 | 0070 6002 05 | AR | Plastic tube | |
| 2036 | 0584 9904 00 | 1 | Sleeve | | 2130 | 0581 2000 27 | 1 | Pipe coupling | |
| 2045 | 0070 6002 04 | AR | Plastic tube | | 2135 | 0070 6002 05 | AR | Plastic tube | |
| 2050 | 0581 1200 16 | 1 | Coupling(elbow) | | 2140 | 0581 2000 27 | 1 | Pipe coupling | |
| 2055 | 0560 4400 85 | 1 | Cross | | 2145 | 0070 6002 05 | AR | Plastic tube | |
| 2060 | 1503 2564 10 | 1 | Nipple | | 2150 | 0581 1200 26 | 1 | Elbow coupling | |
| 2065 | 1613 6961 00 | 1 | Regulator | | 2155 | 1613 6968 04 | 1 | Nozzle | |
| 2070 | 1079 5840 26 | 1 | Hexagon nipple | | 2160 | 1613 6968 03 | 1 | Nozzle | |
| 2075 | 0575 0792 25 | 1 | Hose assembly | | 2170 | <<< >>> | 1 | Unloading valve | |
| 2080 | 1079 5840 26 | 1 | Hexagon nipple | | 2180 | 1088 0031 53 | 1 | Connector | X104 |
| 2085 | 1503 2566 21 | 1 | Tee | | 2190 | 0694 5285 13 | 1 | Cable lug | |

Main switch

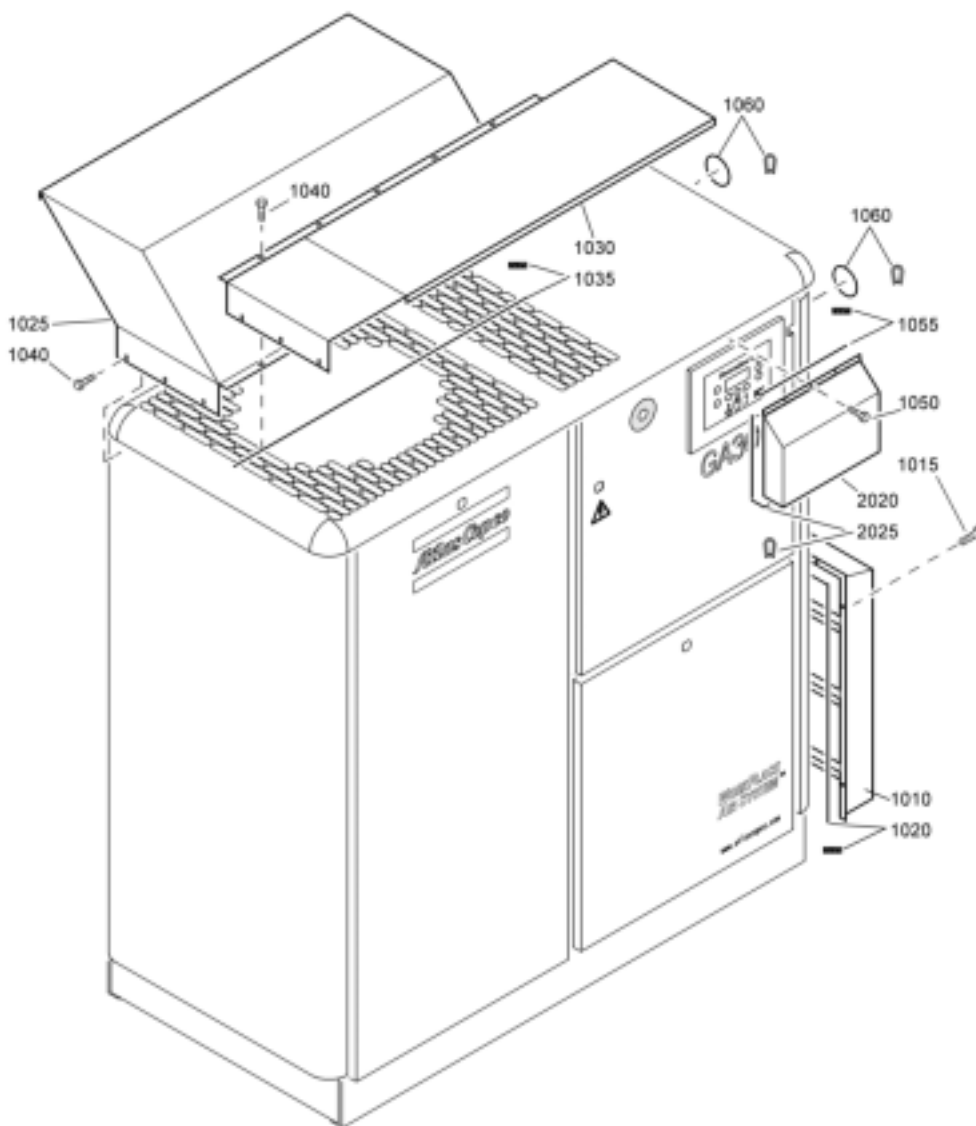


61598_12

| Ref. | Partnumber | Qty | Name | Remarks | Ref. | Partnumber | Qty | Name | Remarks |
|------|---------------------|----------|----------------------|---------|------|--------------|-----|-----------------|---------|
| | 8092 2827 25 | 1 | Main switch | | | | | | |
| 1020 | 1622 1778 03 | • 1 | Disconnecting switch | | 2030 | 1622 0068 01 | • 1 | Threaded nipple | |
| 2010 | 0160 6089 00 | • 4 | Screw | | 2040 | 0697 9809 05 | • 2 | Lock nut | |
| 2020 | 1088 1001 03 | • 1 | Warning mark | | 2050 | 0266 2108 00 | • 4 | Nut | |
| | | | | | 2060 | 0301 2321 00 | • 4 | Washer | |

20

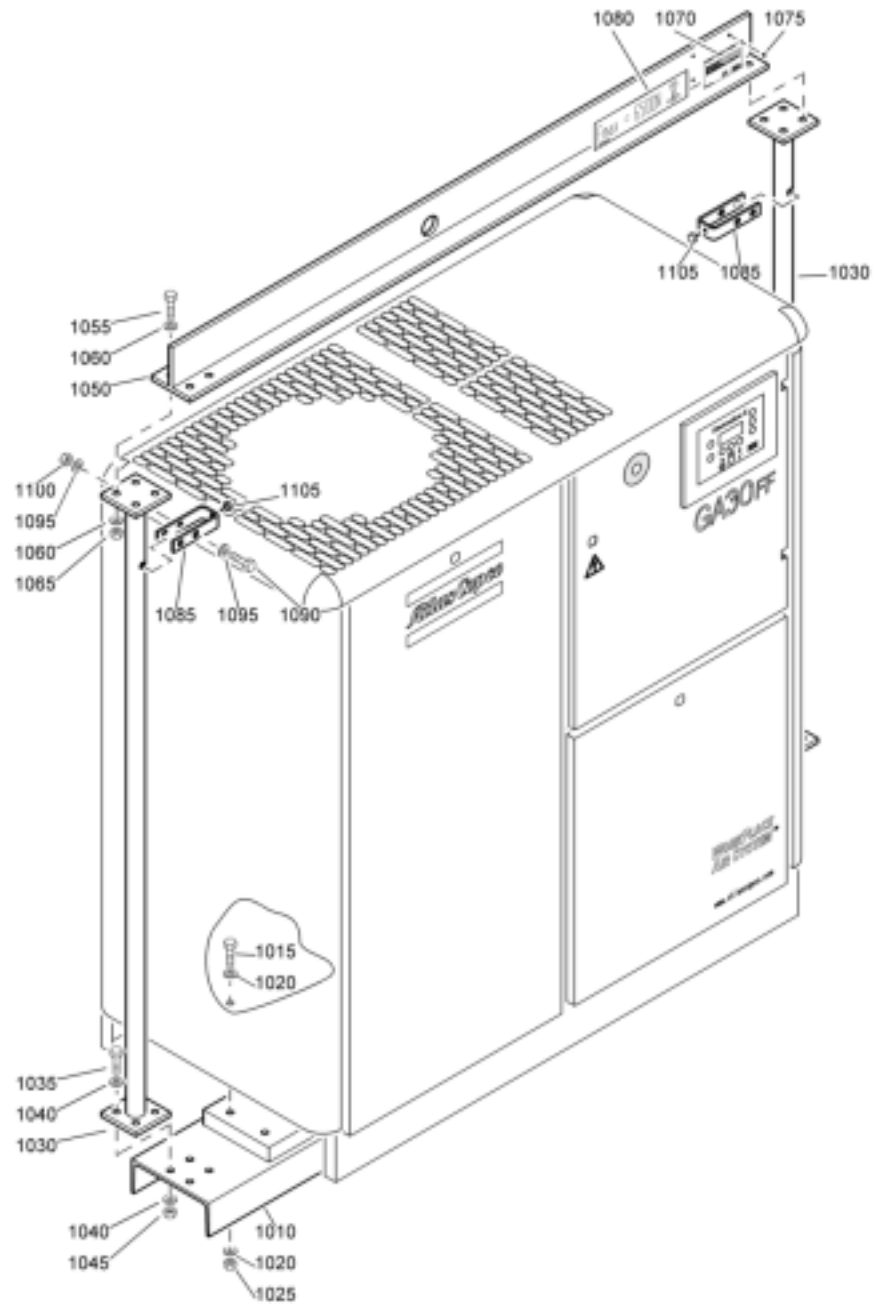
Rain protection



63324_10

| Ref. | Partnumber | Qty | Name | Remarks | Ref. | Partnumber | Qty | Name | Remarks |
|------|---------------------|----------|------------------------|---------|------|---------------------|------------|---------------------|---------|
| | 8092 2465 14 | 1 | Rain protection | | 1040 | 0226 3343 07 | • 17 | Tapping screw | |
| 1010 | 1622 0147 00 | • 1 | Rain cowl | | 1050 | 0226 3256 00 | • 3 | Tapping screw | |
| 1015 | 0226 3343 07 | • 6 | Tapping screw | | 1055 | 1619 3843 00 | • AR | Seal | |
| 1020 | 1619 5188 00 | • AR | Seal | | 1060 | 1503 1056 00 | • AR | Seal | |
| 1025 | 1622 0148 00 | • 1 | Baffle | | | 1613 7954 80 | • 1 | Baffle ass'y | |
| 1030 | 1622 0149 00 | • 1 | Baffle | | 2020 | | •• 1 | Baffle | |
| 1035 | 1619 3843 00 | • AR | Seal | | 2025 | 1503 1056 00 | •• AR | Seal | |

Lifting device

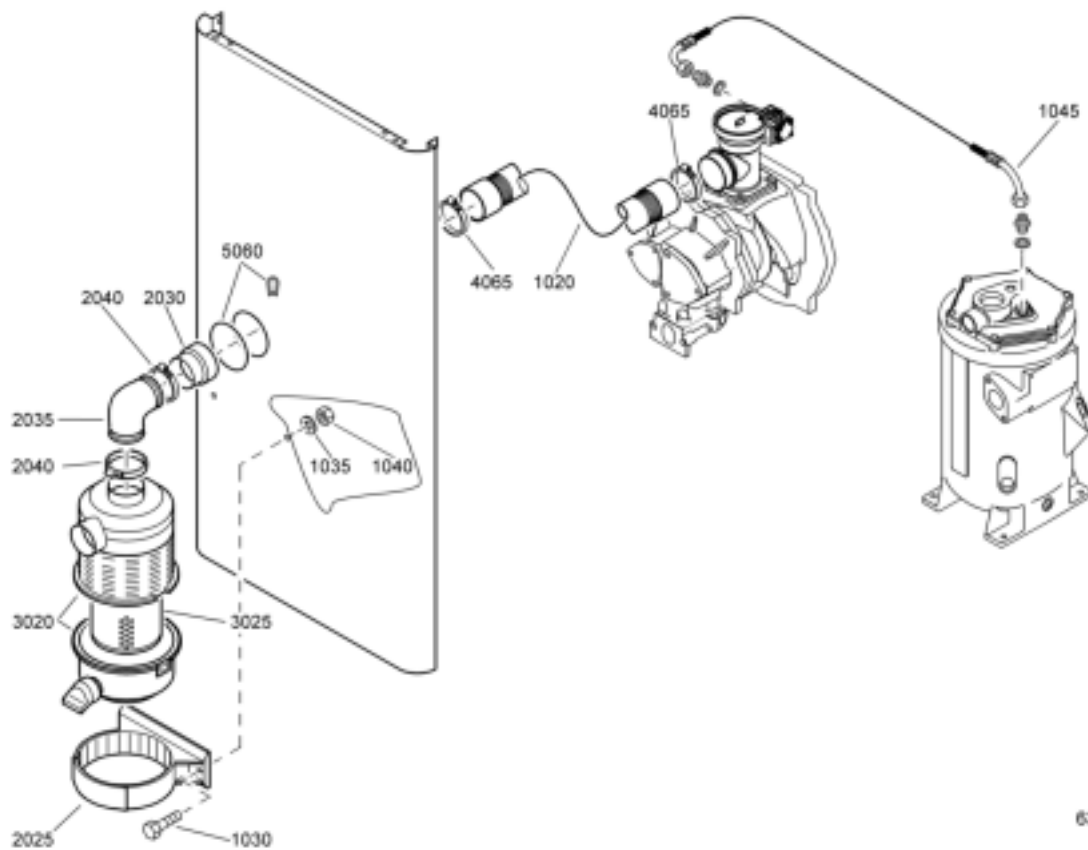


63326_10

| Ref. | Partnumber | Qty | Name | Remarks | Ref. | Partnumber | Qty | Name | Remarks |
|------|--------------|-----|--------------|---------|------|--------------|-----|---------------|---------|
| 1010 | 1622 0150 00 | 1 | Beam | | 1060 | 0301 2344 00 | 16 | Washer | |
| 1015 | 0147 1369 03 | 6 | Hexagon bolt | | 1065 | 0291 1111 00 | 8 | Lock nut | |
| 1020 | 0301 2344 00 | 12 | Washer | | 1070 | 1613 7394 03 | 1 | Data plate | |
| 1025 | 0291 1111 00 | 6 | Lock nut | | 1075 | 0244 4184 00 | 4 | Drive screw | |
| 1030 | 1622 0145 00 | 2 | Support | | 1080 | 1079 9920 96 | 1 | Label | |
| 1035 | 0147 1365 03 | 8 | Hexagon bolt | | 1085 | 1622 0151 00 | 2 | Bracket | |
| 1040 | 0301 2344 00 | 16 | Washer | | 1090 | 0147 1369 03 | 2 | Hexagon bolt | |
| 1045 | 0291 1111 00 | 8 | Lock nut | | 1095 | 0301 2344 00 | 4 | Washer | |
| 1050 | 1622 0146 00 | 1 | Beam | | 1100 | 0291 1111 00 | 2 | Lock nut | |
| 1055 | 0147 1365 03 | 8 | Hexagon bolt | | 1105 | 1619 0269 00 | 2 | Rubber bumper | |

22

Heavy duty filter



63327_02

| Ref. | Partnumber | Qty | Name | Remarks | Ref. | Partnumber | Qty | Name | Remarks |
|------|---------------------|------------|--------------------------|---------|------|---------------------|-------|-------------------------|---------|
| | 8092 2455 32 | 1 | Heavy duty filter | | 2030 | 1622 0173 00 | •• 1 | Adapter | |
| 1020 | 1622 0175 00 | • 1 | Hose ass'y | | 2035 | 1622 0174 00 | •• 1 | Elbow | |
| 1030 | 0147 1327 03 | • 2 | Hexagon bolt | | 2040 | 0347 6114 00 | •• 2 | Hose clip | |
| 1035 | 0301 2335 00 | • 2 | Washer | | | 1622 0170 80 | •• 1 | Air filter ass'y | |
| 1040 | 0266 2110 00 | • 2 | Nut | | 3020 | 1622 0170 00 | ••• 1 | Air filter | |
| 1045 | 0574 9911 12 | • 1 | Hose assembly | | 3025 | 1622 0171 00 | ••• 1 | Filter element | |
| | 1622 0170 81 | • 1 | Air filter ass'y | | 4065 | 0347 6114 00 | 2 | Hose clip | |
| 2025 | 1622 0172 00 | •• 1 | Clamp | | 5060 | 1503 1056 00 | AR | Seal | |

Service kits

| Ref. | Partnumber | Qty | Name | Remarks | Ref. | Partnumber | Qty | Name | Remarks |
|------|---------------------|----------|-------------------------------------------|----------------------|------|---------------------|----------|-----------------------------|------------------------------------|
| | 2901 0002 01 | 1 | Unloading valve kit | | | 2901 0779 00 | 1 | Oil separator kit | Serial number < AII 272 365 |
| | 0291 1110 00 | • 1 | Lock nut | | | | | With bolted Minimum | Pressure valve |
| | 0335 2136 00 | • 1 | Circlip | | | 0663 2111 23 | • 1 | O-ring | |
| | 0335 2140 00 | • 1 | Circlip | | | 0663 2111 24 | • 1 | O-ring | |
| | 0653 1033 00 | • 1 | Flat gasket | | | 1622 0079 00 | • 1 | Oil separator element | |
| | 0663 2101 85 | • 1 | O-ring | | | | | 1 | Oil separator kit |
| | 0663 2104 83 | • 2 | O-ring | | | | | Serial number > AII 272 365 | With screwed Minimum |
| | 0663 2105 46 | • 1 | O-ring | | | | | Pressure valve | |
| | 0663 7132 00 | • 1 | O-ring | | | 2901 0779 01 | | | |
| | 0663 7142 00 | • 1 | O-ring | | | 0663 2111 23 | • 1 | O-ring | |
| | 1202 6999 00 | • 1 | Gasket | | | 0663 2111 24 | • 1 | O-ring | |
| | 1513 0011 00 | • 1 | Spring | | | 1622 0516 00 | • 1 | Oil sep element | |
| | 1613 6783 00 | • 1 | Piston | | | | | 1 | Element mounting kit |
| | 1613 6802 00 | • 1 | Spring | | | 0661 1000 38 | • 1 | Seal washer | |
| | 1613 6969 00 | • 2 | Piston ring | | | 0661 1000 39 | • 1 | Seal washer | |
| | 1613 7310 00 | • 1 | Plate | | | 0663 2103 22 | • 1 | O-ring | |
| | 1613 7699 01 | • 1 | Valve | | | 0663 2107 78 | • 3 | O-ring | |
| | | 1 | Integr. Minimum Pressure Valve kit | | | 0663 7134 00 | • 3 | O-ring | |
| | 2901 0006 00 | | Serial number < AII 272 365 | | | 0663 7142 00 | • 1 | O-ring | |
| | 0333 3237 00 | • 2 | Lock washer | | | | | 1 | Thermostatic valve kit 40° |
| | 0335 3111 00 | • 1 | Retaining ring | | | 1622 7064 01 | • 1 | Thermostatic valve | |
| | 0663 3133 00 | • 1 | O-ring | | | 0663 2101 95 | • 1 | O-ring | |
| | 0663 3135 00 | • 1 | O-ring | | | | | 1 | Thermostatic valve kit 60°C |
| | 0663 7136 00 | • 1 | O-ring | | | 1622 7064 04 | • 1 | Thermostatic valve | |
| | 0663 9868 00 | • 1 | O-ring | | | 0663 2101 95 | • 1 | O-ring | |
| | 1612 4048 00 | • 1 | Compr. Spring | | | | | 1 | Motor bearing kit |
| | 1612 4049 00 | • 1 | Compr. Spring | | | | | 11 kW, 22 kW | |
| | 1613 3223 01 | • 1 | Washer | | | 2901 0716 00 | | Bearing (d end) | |
| | 1614 4662 00 | • 2 | Piston ring | | | 0502 1091 78 | • 1 | Bearing (n end) | |
| | | 1 | Minimum Pressure Valve kit | | | 2901 0719 00 | • 1 | Motor sealing kit | |
| | 2901 0997 00 | | Serial number > AII 272 365 | | | 2901 0338 02 | • 8 | Grease tube motor | |
| | 0661 1000 46 | • 1 | Seal washer | | | | | 1 | Motor bearing kit |
| | 0663 2101 30 | • 1 | O-ring 26.7 x 1 | | | | | 30 kW | |
| | 1622 0525 00 | • 1 | Spring | | | 2901 1414 00 | | | |
| | 1622 0523 01 | • 1 | Valve disk | | | | | 1 | Maintenance kit |
| | 1622 0522 01 | • 1 | Piston | | | | | Serial number < AII 272 365 | |
| | 2901 0245 01 | 1 | Oil can | ROTO-INJECTFLUID 51 | | 2901 0088 00 | | Unloading valve kit | |
| | | | | | | 2901 0002 01 | • 1 | Integr. mpv.kit | |
| | 2901 0522 00 | 1 | Oil can | ROTO-INJECTFLUID 201 | | 2901 0006 00 | • 1 | Filter kit GA 11 | |
| | | | | | | 2901 0695 00 | • 1 | Service kit WSD | |
| | 2901 0695 00 | 1 | Filter kit | | | 2901 0712 00 | • 1 | Oil sep. kit GA | |
| | 0661 1000 39 | • 1 | Seal washer | | | 2901 0779 00 | • 1 | | |
| | 0663 2102 15 | • 1 | O-ring | | | | | 1 | Maintenance kit |
| | 1613 6105 00 | • 1 | Oil filter | | | | | Serial number > AII 272 365 | |
| | 1613 8720 00 | • 1 | Filter element | | | 2901 0002 01 | • 1 | Unl.valv.k.GA 11 | |
| | 2901 0712 00 | 1 | Service kit WSD | | | 2901 0695 00 | • 1 | Filter kit GA 11 | |
| | 0663 2109 81 | • 1 | O-ring | | | 2901 0779 01 | • 1 | Oil sep. kit GA | |
| | 0663 2111 28 | • 1 | O-ring | | | 2901 0997 00 | • 1 | Mpv kit | |
| | 0663 3133 00 | • 3 | O-ring | | | 2901 0712 00 | • 1 | Service kit WSD | |
| | 1613 9227 80 | • 1 | Drain assembly | | | | | 1 | Shaft bearing kit |
| | 2901 0748 00 | 1 | Kit WSD 25, WSD 40 | | | 2901 5005 00 | 1 | O-ring | |
| | 0291 1108 00 | • 1 | Lock nut | | | 0663 2103 22 | • 1 | O-ring | |
| | 0663 9289 00 | • 1 | O-ring | | | 1616 5742 00 | • 1 | Seal washer | |
| | 1613 9225 00 | • 1 | Clamp | | | 1622 0009 00 | • 1 | Bushing | |
| | 1613 9226 00 | • 1 | Ring | | | | | | |

Atlas Copco Stationary Air Compressors

GA 11+, GA 15,+ GA 18+, GA 22+, GA 30
WorkPlace / WorkPlace Full-Feature

Parts list

What sets Atlas Copco apart as a company is our conviction that we can only excel in what we do if we provide the best possible know-how and technology to really help our customers produce, grow and succeed.

There is a unique way of achieving that - we simply call it the Atlas Copco way. It builds on **interaction**, on long-term relationships and involvement in the customers' process, needs and objectives. It means having the flexibility to adapt to the diverse demands of the people we cater for.

It's the **commitment** to our customers' business that drives our effort towards increasing their productivity through better solutions. It starts with fully supporting existing products and continuously doing things better, but it goes much further, creating advances in technology through **innovation**. Not for the sake of technology, but for the sake of our customer's bottom line and peace-of-mind.

That is how Atlas Copco will strive to remain the first choice, to succeed in attracting new business and to maintain our position as the industry leader.